

# \$2,750,000 - 15712 112 Av Nw Nw, Edmonton

MLS® #E4375562

**\$2,750,000**

0 Bedroom, 0.00 Bathroom, 18,869 sqft  
Industrial

Sheffield Industrial, Edmonton, Alberta

18,869 sq.ft. comprised of 14,128 sq.ft.± main floor and 4,741 sq.ft.± second floor office, for a total main building size of 18,869 sq.ft.±. 760 sq.ft.± storage building included in sale. Fenced and secured parking lot or storage area. Recessed dock loading and three 12' x 12' grade loading doors. Second Floor was extensively renovated in 2015 and includes reception, 5 offices, boardroom, large bullpen area, lunchroom and washrooms. Has easy access to 156 Street and Yellowhead Trail and close proximity to public transportation. 3 phase industrial power (to be confirmed by buyer). Ceiling height of 14' - 16' clear span. (id:6289)

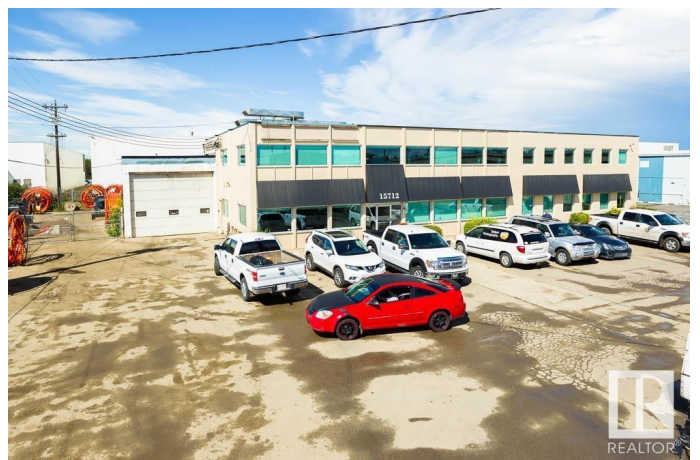
Built in 1962

## Essential Information

Listing #	E4375562
Price	\$2,750,000
Bathrooms	0.00
Square Footage	18,869
Year Built	1962
Type	Industrial

## Community Information

Address	15712 112 Av Nw Nw
Subdivision	Sheffield Industrial
City	Edmonton
Province	Alberta



Postal Code T5M2W1

## Listing Details

Listing Office NAI Commercial Real Estate Inc



The trademarks MLS®, Multiple Listing Service® and the associated logos are owned by The Canadian Real Estate Association (CREA) and identify the quality of services provided by real estate professionals who are members of CREA. REALTOR®. Member of CREA and more.

Listing information last updated on October 14th, 2025 at 2:16am PDT