

# \$1,250,000 - 31 Windermere Dr Sw, Edmonton

MLS® #E4368085

**\$1,250,000**

0 Bedroom, 0.00 Bathroom,  
Vacant Land on 0.30 Acres

Windermere, Edmonton, Alberta

VACANT LOT on WINDERMERE DR SW!  
BUILD YOUR LUXURY DREAM HOME HERE  
â€” on this perfect VACANT LOT on  
prestigious WINDERMERE DRIVE South!  
74â€™ building pocket. Right between  
Windermere Golf and Country Club and River  
Ridge Golf Club and a minute to the North  
Saskatchewan River and trails! AIRPORT is  
20minute drive away! HOA allows access to  
the pool etc at the Windermere Leisure Centre.  
An outstanding and unique opportunity to  
create a residence that embodies luxury,  
sophistication, and the elevated lifestyle you  
desire. (id:6289)

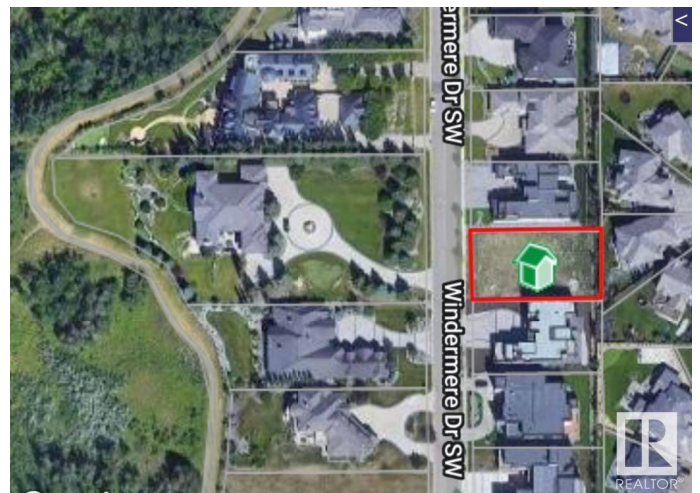
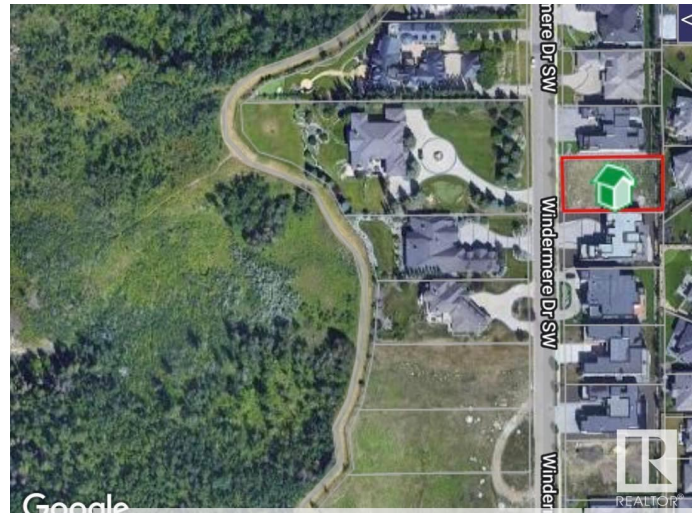
## Essential Information

Listing #	E4368085
Price	\$1,250,000
Bathrooms	0.00
Acres	0.30
Type	Vacant Land
Sub-Type	Freehold

## Community Information

Address	31 Windermere Dr Sw
Subdivision	Windermere
City	Edmonton
Province	Alberta
Postal Code	T6W0S2

## Amenities



Amenities	Airport, Golf Course, Playground, Public Transit, Schools, Shopping
Features	Private setting, See remarks, No back lane

## Listing Details

Listing Office      MaxWell Polaris



The trademarks MLS®, Multiple Listing Service® and the associated logos are owned by The Canadian Real Estate Association (CREA) and identify the quality of services provided by real estate professionals who are members of CREA. REALTOR®. Member of CREA and more.

Listing information last updated on October 12th, 2025 at 8:47pm PDT