

\$1,031,000 - #200 9622 42 Av Nw Nw, Edmonton

MLS® #E4354499

\$1,031,000

0 Bedroom, 0.00 Bathroom, 4,123 sqft
Office

Strathcona Industrial Park, Edmonton, Alberta

Welcome to Whitemud Business Park! This established southside office park has recently underwent a condo conversion so units are now for sale! Sizes range from 915 Sq. Ft. up to 6,964 Sq. Ft. The park has a campus-like environment designed to enhance connectivity and collaboration. On-site amenities include a gym space exclusive to building occupants and an outdoor eating/gathering area soon to be improved. Great access to Whitemud Drive, QEII, and Anthony Henday Drive. This particular unit is 4,123 Sq. Ft. of developed office space with over 20 perimeter offices with windows, kitchen area, and meeting rooms. A summary of all current availabilities can be found on the brochure, we may also have other units coming up within the building that meet your size range. (id:6289)

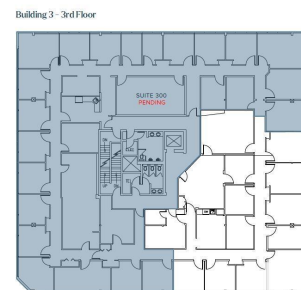
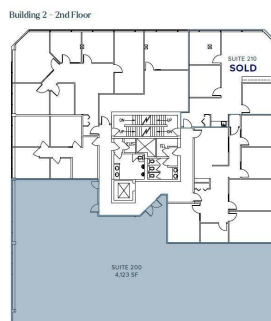
Built in 1980

Essential Information

Listing #	E4354499
Price	\$1,031,000
Bathrooms	0.00
Square Footage	4,123
Year Built	1980
Type	Office

Community Information

Address	#200 9622 42 Av Nw Nw
Subdivision	Strathcona Industrial Park



City	Edmonton
Province	Alberta
Postal Code	T6E5Y7

Listing Details

Listing Office NAI Commercial Real Estate Inc



The trademarks MLS®, Multiple Listing Service® and the associated logos are owned by The Canadian Real Estate Association (CREA) and identify the quality of services provided by real estate professionals who are members of CREA. REALTOR®. Member of CREA and more.

Listing information last updated on October 12th, 2025 at 9:16pm PDT