

# \$775,000 - #301 11044 82 Av Nw Nw, Edmonton

MLS® #E4344267

**\$775,000**

0 Bedroom, 0.00 Bathroom, 2,809 sqft  
Office

Garneau, Edmonton, Alberta

The Garneau Professional Centre is located on Whyte Ave within walking distance to the U of A. This building has recently been converted into condos, meaning these units have never been for sale individually until now. Excellent opportunity for owner/user groups. Instead of paying rent, build equity and put your money back into your pocket. Ideal for medical and professional users. Building Features include underground parking, ample visitor parking, signage opportunities facing Whyte Avenue traffic, elevators and over \$1M in common area renovations. There are several size options available from 732 Sq. Ft. up to 8,353 Sq. Ft. with a healthy mix of developed medical and office space as well as some raw units ready for your customization. (id:6289)

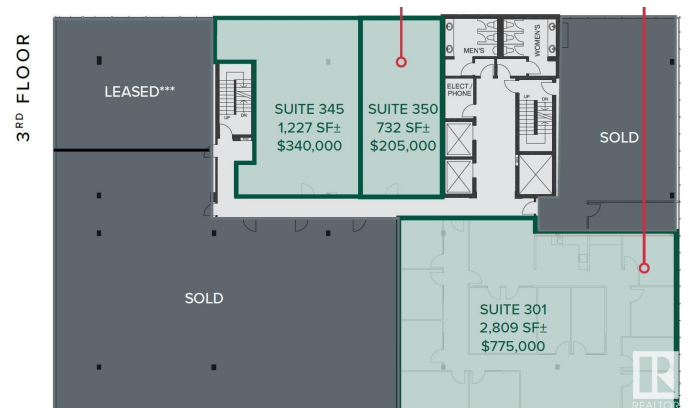
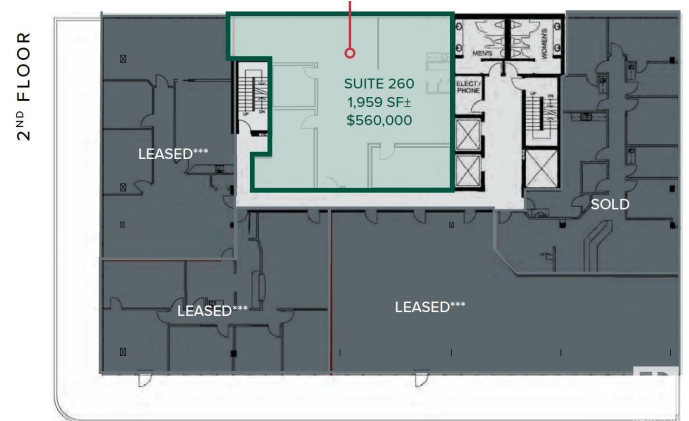
Built in 1981

## Essential Information

Listing #	E4344267
Price	\$775,000
Bathrooms	0.00
Square Footage	2,809
Year Built	1981
Type	Office

## Community Information

Address	#301 11044 82 Av Nw Nw
Subdivision	Garneau



City	Edmonton
Province	Alberta
Postal Code	T6G0T2

## Listing Details

Listing Office      NAI Commercial Real Estate Inc



The trademarks MLS®, Multiple Listing Service® and the associated logos are owned by The Canadian Real Estate Association (CREA) and identify the quality of services provided by real estate professionals who are members of CREA. REALTOR®. Member of CREA and more.

Listing information last updated on October 15th, 2025 at 10:01am PDT