

\$399,900 - 10314 Hwy 29, Rural St. Paul County

MLS® #E4331466

\$399,900

0 Bedroom, 0.00 Bathroom,
Vacant Land on 11.73 Acres

None, Rural St. Paul County, Alberta

Improved commercial land just 4 1/2 miles West of St. Paul- This property is presently zoned Agricultural and offers an abundance of possibilities with it's great highway exposure and room to develop for whatever your needs might be. The property has older structures, a drilled well, septic system, power and gas. What could you do with 11.73 acres? The options are many! (id:6289)

Built in 1968

Essential Information

Listing #	E4331466
Price	\$399,900
Bathrooms	0.00
Acres	11.73
Year Built	1968
Type	Vacant Land

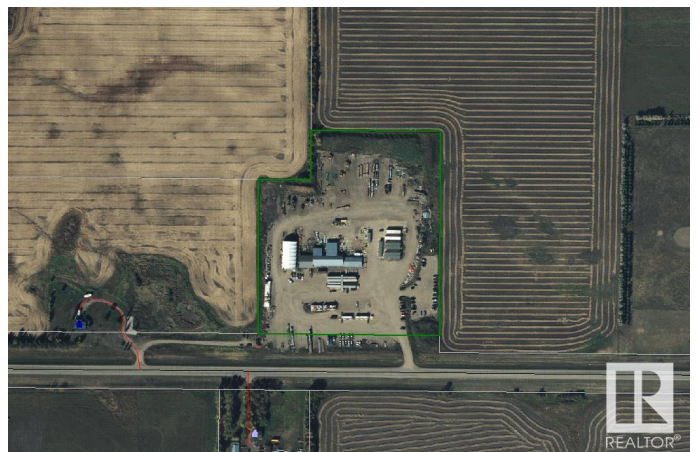
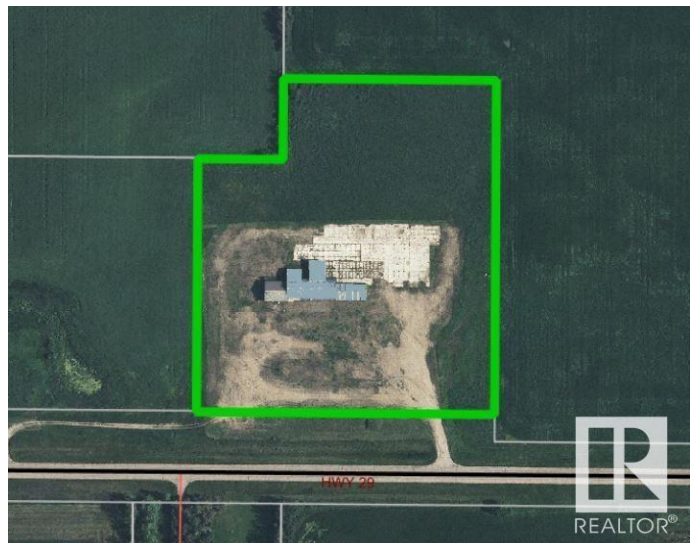
Community Information

Address	10314 Hwy 29
Subdivision	None
City	Rural St. Paul County
Province	Alberta
Postal Code	T0A3A0

Amenities

Features	Visual exposure, Flat site
----------	----------------------------

Listing Details



Listing Office

Century 21 Poirier Real Estate



The trademarks MLS®, Multiple Listing Service® and the associated logos are owned by The Canadian Real Estate Association (CREA) and identify the quality of services provided by real estate professionals who are members of CREA. REALTOR®. Member of CREA and more.

Listing information last updated on October 14th, 2025 at 7:47pm PDT