

\$ - 25 Wheatland Cr, Provost

MLS® #E4256286

\$

0 Bedroom, 0.00 Bathroom, 12,000 sqft
Industrial

Provost, Provost, Alberta

* Opportunity to Lease freestanding office/warehouse building totaling 12,000 sq.ft.± on 0.75 acres±. * Main floor consists of 10,500 sq.ft.± warehouse space and 1,500 sq.ft.± of functional air-conditioned office space * Bonus second floor office and lunchroom with kitchenette (1,500 sq.ft.±) included free of charge * Great location with easy access to Highway 13 and Hwy 899. Less than an hour from Hardisty * Drive through capability with 5 grade loading doors * Wash bay with potential for Hotsy installation * Heavy power and multiple sumps (id:6289)

Built in 1987

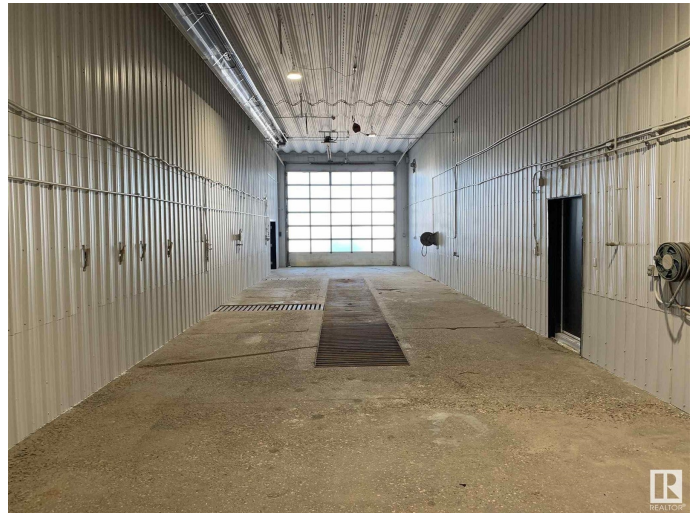
Essential Information

Listing #	E4256286
Bathrooms	0.00
Square Footage	12,000
Year Built	1987
Type	Industrial

Community Information

Address	25 Wheatland Cr
Subdivision	Provost
City	Provost
Province	Alberta
Postal Code	T0B3S0

Listing Details



Listing Office

NAI Commercial Real Estate Inc



The trademarks MLS®, Multiple Listing Service® and the associated logos are owned by The Canadian Real Estate Association (CREA) and identify the quality of services provided by real estate professionals who are members of CREA. REALTOR®. Member of CREA and more.

Listing information last updated on October 14th, 2025 at 12:01pm PDT