

# \$2,900,000 - Southeast Twp 560 Rr 252, Rural Sturgeon County

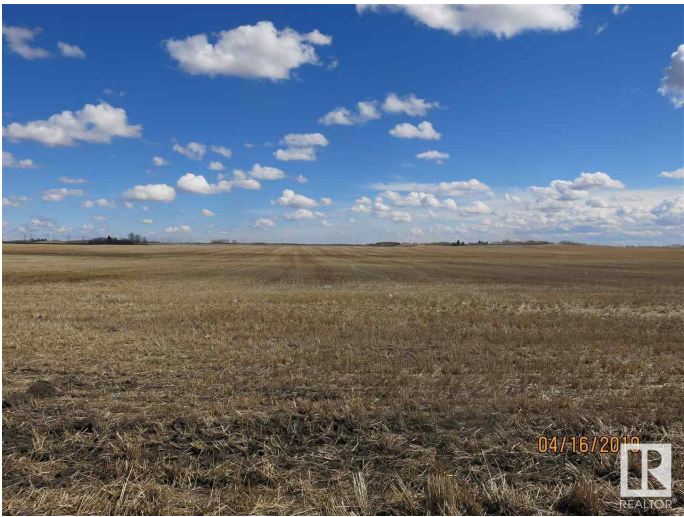
MLS® #E4223208

**\$2,900,000**

0 Bedroom, 0.00 Bathroom,  
Vacant Land on 148.71 Acres

None, Rural Sturgeon County, Alberta

Amazing Opportunity!! 148.711 acres of current farmed land with future redevelopment possibility. #1 soil, excellent for canola and barley crops. Superior long term hold. This property is adjacent to the town of Morinville on the East side, Secondary Hwy 642 and Range Road 252. Sellers will lease back and stagger purchase price. manawin ditch tax 42.03 for 2024 (id:6289)



## Essential Information

Listing #	E4223208
Price	\$2,900,000
Bathrooms	0.00
Acres	148.71
Type	Vacant Land

## Community Information

Address	Southeast Twp 560 Rr 252
Subdivision	None
City	Rural Sturgeon County
Province	Alberta
Postal Code	T8R1S1

## Amenities

Amenities	Golf Course, Schools
-----------	----------------------

## Listing Details

Listing Office

Royal LePage Arteam Realty



The trademarks MLS®, Multiple Listing Service® and the associated logos are owned by The Canadian Real Estate Association (CREA) and identify the quality of services provided by real estate professionals who are members of CREA. REALTOR®. Member of CREA and more.

Listing information last updated on October 13th, 2025 at 5:16pm PDT