

# \$799,041 - 41 Teresa Drive, Whitby (downtown Whitby)

MLS® #E12457589

**\$799,041**

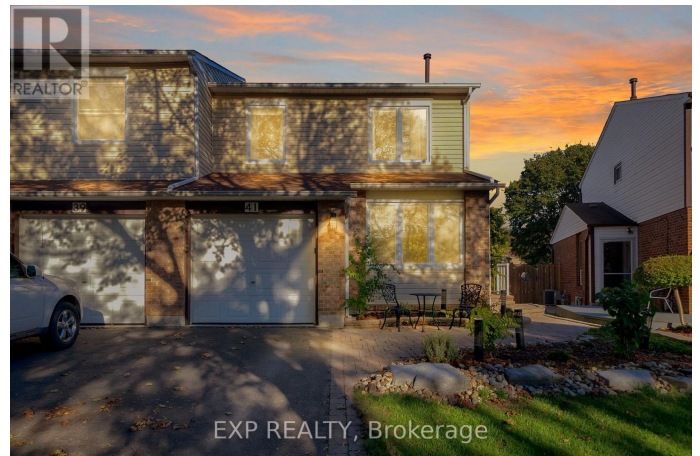
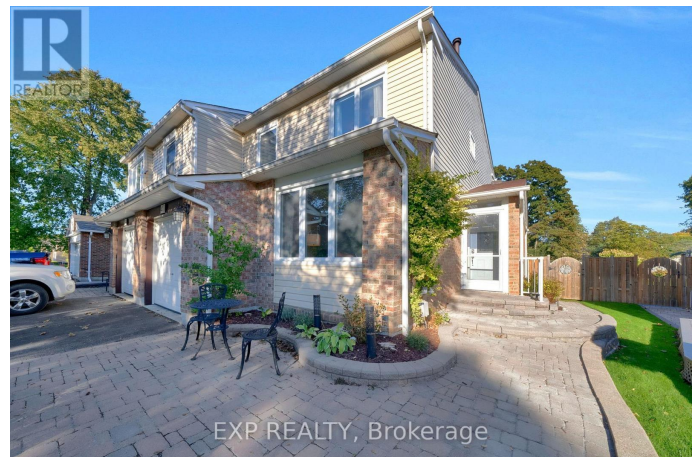
3 Bedroom, 2.00 Bathroom,  
Single Family on 0.00 Acres

Downtown Whitby, Whitby (downtown Whitby),  
Ontario

Welcome to this beautifully maintained 3-bedroom, 2-storey home perfectly situated in one of Downtown Whitby's most desirable neighbourhoods offering privacy, charm, and convenience. Step inside to find gleaming hardwood floors and a bright, updated kitchen featuring stainless steel appliances, ample pantry space, and a view overlooking the separate dining room with a walkout to a spacious deck perfect for morning coffee or evening entertaining. Upstairs, you'll find three generous bedrooms, all with newer broadloom and fresh updates, while the finished basement provides even more living space with a cozy recreation room and a flex office/playroom/craft room ideal for today's lifestyle. Enjoy the outdoors in your premium 140-foot deep backyard, offering no rear neighbours, room for a pool, and plenty of space for family gatherings or summer barbecues. (id:6289)

## Essential Information

Listing #	E12457589
Price	\$799,041
Bedrooms	3
Bathrooms	2.00
Half Baths	1
Acres	0.00
Type	Single Family



Sub-Type Freehold

## Community Information

Address 41 Teresa Drive  
Subdivision Downtown Whitby  
City Whitby (downtown Whitby)  
Province Ontario  
Postal Code L1N6H9

## Amenities

Parking Spaces 3  
Parking Garage  
# of Garages 1

## Interior

Appliances All, Dryer, Washer, Window Coverings  
Heating Natural gas Forced air  
Cooling Central air conditioning  
# of Stories 2  
Has Basement Yes

## Exterior

Exterior Brick, Vinyl siding  
Lot Description 24.7 x 140.1 FT ; Irreg  
Foundation Poured Concrete

## Listing Details

Listing Office EXP REALTY



The trademarks MLS®, Multiple Listing Service® and the associated logos are owned by The Canadian Real Estate Association (CREA) and identify the quality of services provided by real estate professionals who are members of CREA. REALTOR®. Member of CREA and more.

Listing information last updated on October 12th, 2025 at 9:16pm PDT