

\$1,499,000 - 74 Lewis Street, Toronto (south Riverdale)

MLS® #E12455029

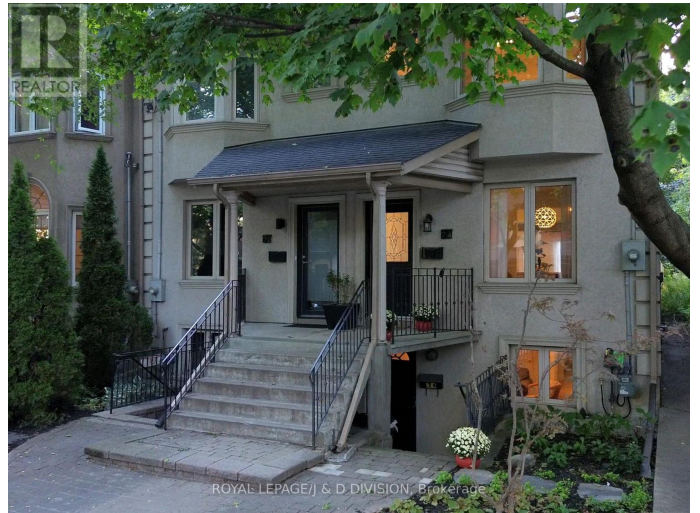
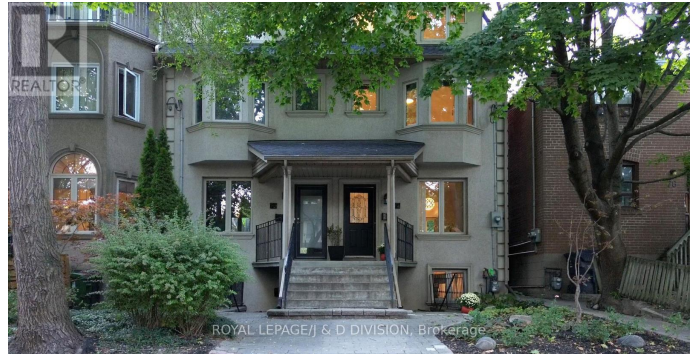
\$1,499,000

5 Bedroom, 4.00 Bathroom,
Single Family on 0.00 Acres

South Riverdale, Toronto (south Riverdale),
Ontario

Welcome to this incredible Leslieville home, recently and extensively renovated. Beautifully situated on a quiet treelined street, a tranquil setting in an urban locale. 1650 square feet is offered on three floors, plus a further 600 square feet in the basement apartment with a separate entrance. The main floor features a living room, open concept kitchen combined with dining room and family room. Note there is a powder room on this floor. Three spacious bedrooms, a washroom and laundry room are offered on the second floor. On the third floor is a master retreat with dramatic vaulted ceilings which walks out to a large sundeck drenched in western light. The lower level is devoted to the basement apartment with excellent above grade windows and a legal egress. Absolutely turnkey! The garden is deep with lovely mature trees and benefits from the beautiful western exposure and recent professional landscaping. Enjoy being steps to vibrant Queen Street East and the nearby Jimmy Simpson Park, plus many of Toronto's finest shops and restaurants. Transit is at your doorstep as is convenient highway access. The East Harbour Transit Hub is being built just south and will be a major transit hub for TTC and GO trains, connecting with the Ontario Line (under construction) and the Stouffville line. *Open Weekend: Saturday October 11th & Sunday October 12th!*

(id:6289)



Essential Information

Listing #	E12455029
Price	\$1,499,000
Bedrooms	5
Bathrooms	4.00
Half Baths	1
Acres	0.00
Type	Single Family
Sub-Type	Freehold

Community Information

Address	74 Lewis Street
Subdivision	South Riverdale
City	Toronto (south Riverdale)
Province	Ontario
Postal Code	M4M2H3

Amenities

Amenities	Fireplace(s)
Parking	No Garage

Interior

Appliances	Dryer, Washer, Window Coverings
Heating	Natural gas Forced air
Cooling	Central air conditioning
Fireplace	Yes
# of Fireplaces	1
# of Stories	3
Has Basement	Yes
Basement	Separate entrance

Exterior

Exterior	Stucco
Lot Description	15.8 x 135 FT
Foundation	Concrete

Listing Details

Listing Office	ROYAL LEPAGE/J & D DIVISION
----------------	-----------------------------



The trademarks MLS®, Multiple Listing Service® and the associated logos are owned by The Canadian Real Estate Association (CREA) and identify the quality of services provided by real estate professionals who are members of CREA. REALTOR®. Member of CREA and more.

Listing information last updated on October 12th, 2025 at 9:46pm PDT