

\$1,299,000 - 444 Pharmacy Avenue, Toronto (Clairlea-Birchmount)

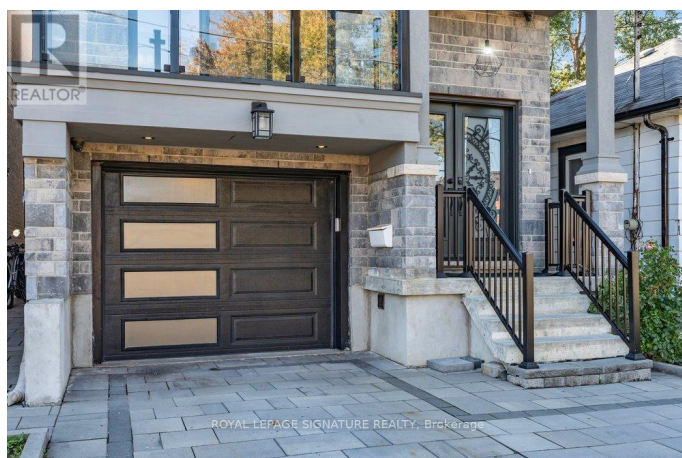
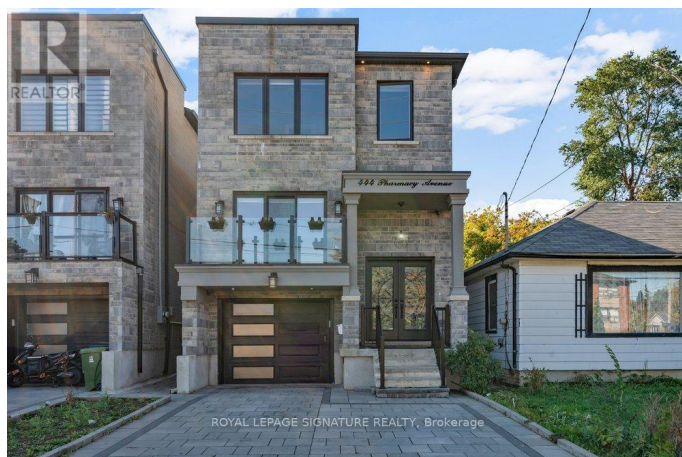
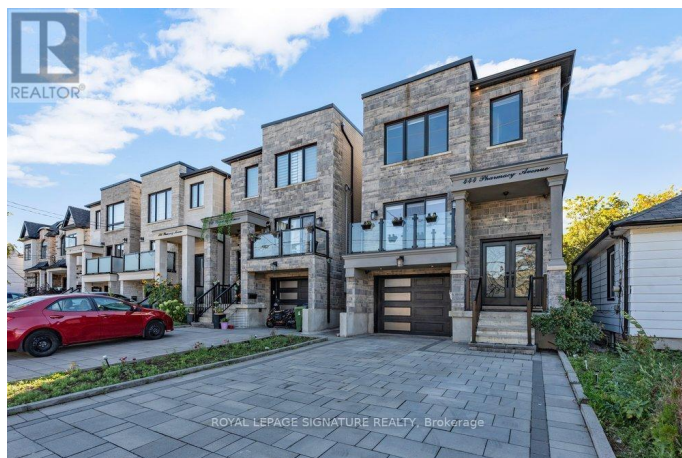
MLS® #E12455012

\$1,299,000

6 Bedroom, 5.00 Bathroom,
Single Family on 0.00 Acres

Clairlea-Birchmount, Toronto
(Clairlea-Birchmount), Ontario

Welcome home to this stunning, custom-built, detached 4+2 bedroom, 5 bathroom property located in the desirable Clairlea Community! The main floor is a showcase of contemporary elegance starting with a spacious foyer with gorgeous porcelain floors, 10.5 foot ceiling and 2-piece powder room. Step up to the living room with a dramatic custom feature wall accompanied by the open-concept family and dining room that features an impressive fireplace, an abundance of natural light, pot lights and a walk-out to the deck. The chef-inspired kitchen impresses with sleek quartz counters and backsplash, built-in stainless steel appliances, a large centre island with breakfast seating, a tremendous amount of storage with display cabinets and 10.5 foot ceilings. Upstairs, the primary suite is a private retreat with a 6-piece ensuite, walk-in closet and private balcony. The second bedroom boasts hardwood floors, a walk-in closet and 4-piece ensuite. The third and fourth generous sized bedrooms also feature hardwood floors, large closets and large windows which share a modern 4-piece family bathroom with body spray unit in the shower. Second floor laundry room with stainless steel appliances provides the ultimate convenience. The lower level basement apartment with separate entrance offers an open concept recreation room, kitchen with stainless steel



appliances and 2 spacious bedrooms, one with an above grade window and one with a walk-out to the backyard. Secondary laundry room in the lower level gives your income property or in-law suite added convenience. Located just minutes from Victoria Park Station, the Eglinton LRT, top-rated schools, shopping plazas, parks, and community centres, this home offers unmatched access to everything you need in a convenient neighbourhood! Don't miss out on calling this gem your new home! (id:6289)

Essential Information

Listing #	E12455012
Price	\$1,299,000
Bedrooms	6
Bathrooms	5.00
Half Baths	1
Acres	0.00
Type	Single Family
Sub-Type	Freehold

Community Information

Address	444 Pharmacy Avenue
Subdivision	Clairlea-Birchmount
City	Toronto (clairlea-Birchmount)
Province	Ontario
Postal Code	M1L3G6

Amenities

Amenities	Schools, Public Transit, Place of Worship, Park
Features	Ravine
Parking Spaces	4
Parking	Garage
# of Garages	1

Interior

Appliances	Dishwasher, Dryer, Hood Fan, Microwave, Oven, Stove, Washer,
------------	--

	Refrigerator
Heating	Natural gas Forced air
Cooling	Central air conditioning
Fireplace	Yes
# of Stories	2
Has Basement	Yes
Basement	Separate entrance

Exterior

Exterior	Stone
Exterior Features	Landscaped
Lot Description	25 x 102.8 FT
Foundation	Poured Concrete

Listing Details

Listing Office ROYAL LEPAGE SIGNATURE REALTY



The trademarks MLS®, Multiple Listing Service® and the associated logos are owned by The Canadian Real Estate Association (CREA) and identify the quality of services provided by real estate professionals who are members of CREA. REALTOR®. Member of CREA and more.

Listing information last updated on October 12th, 2025 at 7:31pm PDT