

\$1,249,900 - 11 Elmer Adams Drive, Clarington (courtice)

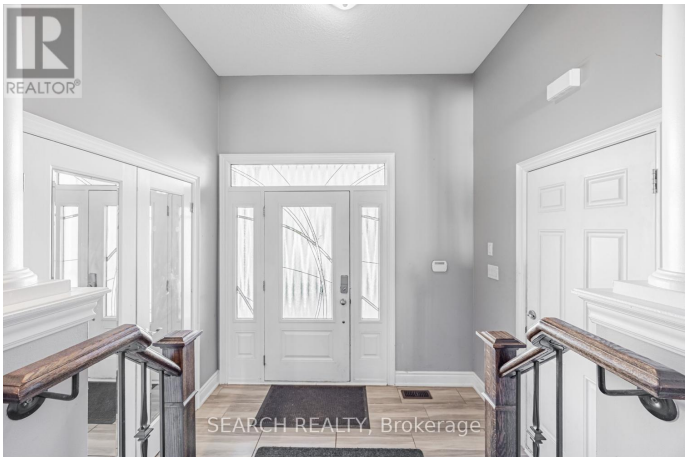
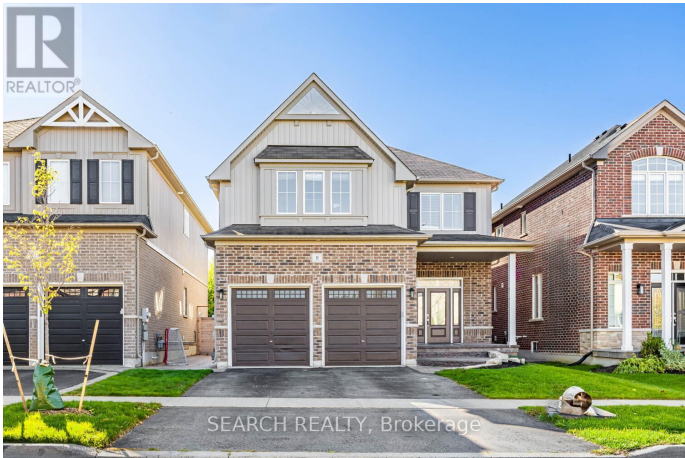
MLS® #E12454198

\$1,249,900

5 Bedroom, 4.00 Bathroom,
Single Family on 0.00 Acres

Courtice, Clarington (courtice), Ontario

Welcome to your dream home in the heart of Courtice. This stunning detached home features a spacious two-car garage and a grand entrance that sets the tone for what's inside. The open-concept main floor is bright and inviting, complete with a convenient main-floor laundry room and seamless flow that's perfect for both everyday living and entertaining. Upstairs you'll find four generous bedrooms and four beautifully finished washrooms, offering comfort and style for the whole family. The separate entrance to the basement provides incredible potential for an in-law suite or future income opportunity. Step outside to a beautifully landscaped yard featuring a charming gazebo the perfect space to relax and unwind. Luxury, space, and functionality come together in this exceptional Courtice home. (id:6289)



Essential Information

Listing #	E12454198
Price	\$1,249,900
Bedrooms	5
Bathrooms	4.00
Half Baths	1
Acres	0.00
Type	Single Family
Sub-Type	Freehold

Community Information

Address	11 Elmer Adams Drive
Subdivision	Courtice
City	Clarington (courtice)
Province	Ontario
Postal Code	L1E0G8

Amenities

Amenities	Park, Public Transit, Schools
Parking Spaces	4
Parking	Garage
# of Garages	1

Interior

Appliances	Dryer, Stove, Washer, Window Coverings, Refrigerator
Heating	Natural gas Forced air
Cooling	Central air conditioning
Fireplace	Yes
# of Stories	2
Has Basement	Yes

Exterior

Exterior	Brick, Vinyl siding
Lot Description	39.4 x 103.9 FT
Foundation	Unknown

Listing Details

Listing Office	SEARCH REALTY
----------------	---------------



The trademarks MLS®, Multiple Listing Service® and the associated logos are owned by The Canadian Real Estate Association (CREA) and identify the quality of services provided by real estate professionals who are members of CREA. REALTOR®. Member of CREA and more.

Listing information last updated on October 13th, 2025 at 8:16am PDT