

\$3,600 - 492 Palmtree Crescent, Oshawa (eastdale)

MLS® #E12447427

\$3,600

4 Bedroom, 3.00 Bathroom,
Single Family on 0.00 Acres

Eastdale, Oshawa (eastdale), Ontario

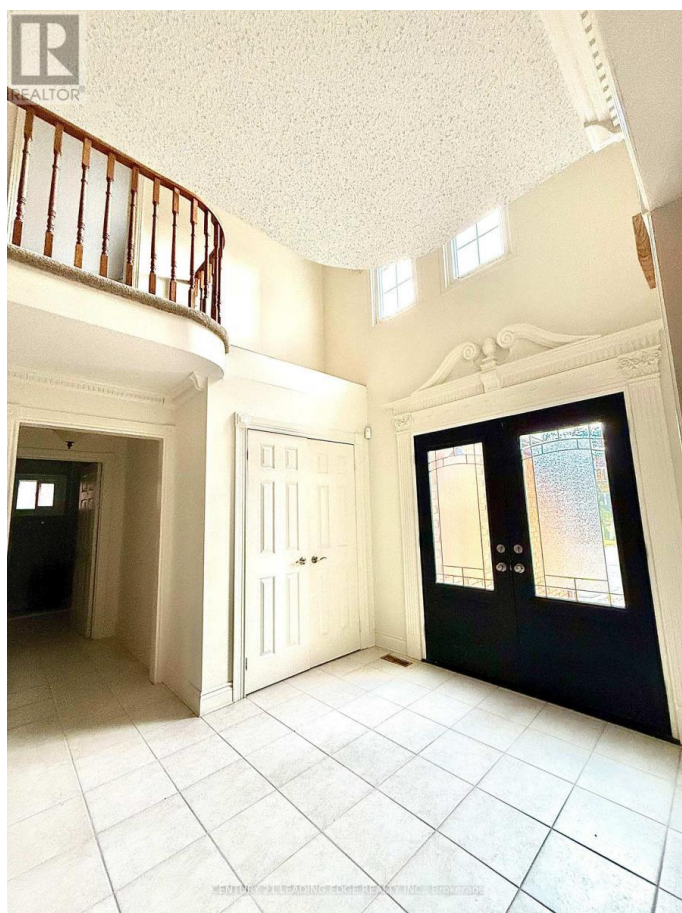
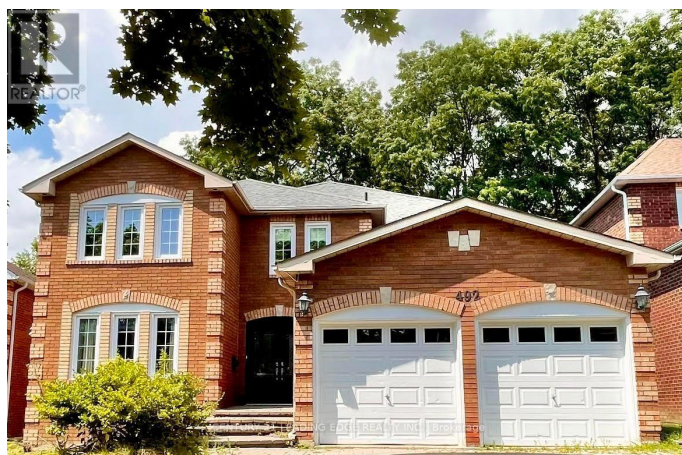
Welcome to this Stunning detached and spacious home situated on a Ravine lot in a quiet neighborhood in South Oshawa. Close to schools, parks and minutes away from the 401. The main floor features beautiful hardwood flooring, with a walk-out to the deck, and California shutters in both the kitchen and family room. Enjoy cozy evenings by the fireplace and take advantage of the custom built-in bookcase in the office for added storage. Freshly painted and renovated with new Laminate flooring and Carpet on Second Floor. Don't Miss Out On a Chance to make This Exceptional Home Yours Today! Tenant Responsible For Snow Removal And Lawn Maintenance. No Smokers or Pets. (id:6289)

Essential Information

Listing #	E12447427
Price	\$3,600
Bedrooms	4
Bathrooms	3.00
Half Baths	1
Acres	0.00
Type	Single Family
Sub-Type	Freehold

Community Information

Address	492 Palmtree Crescent
Subdivision	Eastdale



City	Oshawa (eastdale)
Province	Ontario
Postal Code	L1K2H3

Amenities

Features	Ravine
Parking Spaces	3
Parking	Attached Garage, Garage
# of Garages	2

Interior

Appliances	Garage door opener remote(s), Water Heater, Dishwasher, Microwave, Stove, Refrigerator
Heating	Natural gas Forced air
Cooling	Central air conditioning
Fireplace	Yes
# of Fireplaces	1
# of Stories	2

Exterior

Exterior	Brick
Lot Description	49.2 x 114.8 FT
Foundation	Unknown

Listing Details

Listing Office	CENTURY 21 LEADING EDGE REALTY INC.
----------------	-------------------------------------



The trademarks MLS®, Multiple Listing Service® and the associated logos are owned by The Canadian Real Estate Association (CREA) and identify the quality of services provided by real estate professionals who are members of CREA. REALTOR®. Member of CREA and more.

Listing information last updated on October 13th, 2025 at 8:46am PDT