

\$799,999 - 1800 Shadybrook Drive, Pickering (amberlea)

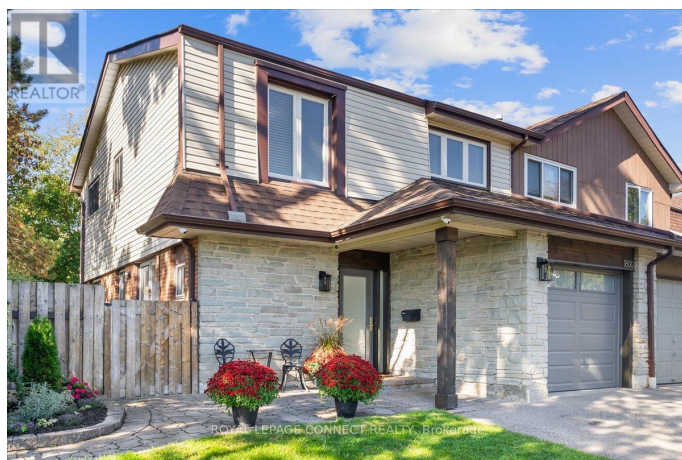
MLS® #E12446176

\$799,999

4 Bedroom, 3.00 Bathroom,
Single Family on 0.00 Acres

Amberlea, Pickering (amberlea), Ontario

Welcome to 1800 Shadybrook Drive, Located In The Sought After Amberlea Community! This 4-Bedroom, 3-Bathroom Home Blends Modern Upgrades With A Warm, Inviting Feel. Pride Of Ownership Is Evident Throughout, With Thoughtful Updates And Meticulous Care Inside And Out. Sun-Filled And Freshly Painted, This Home Feels Warm And Welcoming From The Moment You Step Inside. Updated Light Fixtures Add A Modern Touch. The Kitchen Shines With A Stylish Backsplash, Quartz Countertops, And Stainless Steel Appliances. The Primary Bedroom Features A Brand New Custom Closet, Offering Ample Storage And A Touch Of Luxury. Generous Sized Bedrooms Have Large Closets With Closet Organizers. Beautifully Renovated Basement (2021) Provides Valuable Additional Space, Complete With A Sleek 3-Piece Washroom And Pot Lighting. Convenient Garage Access from Inside The Home. Recent Updates Include A New Heat Pump And A/C (2024), Along With A Modern Garage Door And Front Door (2024) For Added Curb Appeal. Outside Security Cameras (2022) For Added Peace Of Mind. Located Right Beside The Neighbourhood Park, This Home Features A Beautifully Treed Backyard, Offering Privacy And A Serene Setting. Families Will Love The Proximity To Top-Rated Public And Catholic Schools, Walking Distance To Shopping, And Easy Access To Highway 401. Beautifully Maintained, Thoughtfully Upgraded, And



Move-In Ready. This Amberlea Gem Truly Shows Pride Of Ownership And Is Waiting For Its Next Owners! (id:6289)

Essential Information

| | |
|------------|---------------|
| Listing # | E12446176 |
| Price | \$799,999 |
| Bedrooms | 4 |
| Bathrooms | 3.00 |
| Half Baths | 1 |
| Acres | 0.00 |
| Type | Single Family |
| Sub-Type | Freehold |

Community Information

| | |
|-------------|-----------------------|
| Address | 1800 Shadybrook Drive |
| Subdivision | Amberlea |
| City | Pickering (amberlea) |
| Province | Ontario |
| Postal Code | L1V3A5 |

Amenities

| | |
|----------------|-------------------------|
| Parking Spaces | 3 |
| Parking | Attached Garage, Garage |
| # of Garages | 2 |

Interior

| | |
|--------------|--|
| Appliances | Garage door opener remote(s), Dryer, Freezer, Alarm System, Washer, Window Coverings |
| Heating | Natural gas Forced air |
| Cooling | Central air conditioning |
| # of Stories | 2 |
| Has Basement | Yes |

Exterior

| | |
|-----------------|---------------------|
| Exterior | Brick, Vinyl siding |
| Lot Description | 36.4 x 108.6 FT |
| Foundation | Concrete |

Listing Details

Listing Office ROYAL LEPAGE CONNECT REALTY



The trademarks MLS®, Multiple Listing Service® and the associated logos are owned by The Canadian Real Estate Association (CREA) and identify the quality of services provided by real estate professionals who are members of CREA. REALTOR®. Member of CREA and more.

Listing information last updated on October 15th, 2025 at 11:16am PDT