

\$599,900 - 1326 Valley Drive, Oshawa (lakeview)

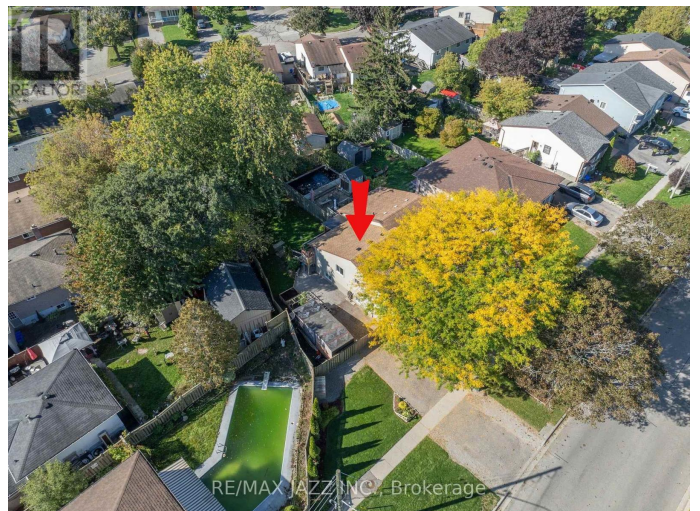
MLS® #E12443390

\$599,900

3 Bedroom, 2.00 Bathroom,
Single Family on 0.00 Acres

Lakeview, Oshawa (lakeview), Ontario

Rarely offered, this charming Raised Semi-Detached Bungalow sits on an incredible 70 ft wide front lot - a rare find that not only enhances curb appeal but also offers the possibility of extra parking. A double gate opens to the backyard with racetrack parking, perfect for trailers, boats, or multiple vehicles. Across from protected forest and ravine land, the home enjoys serene, scenic views right from the living room window, filling the space with natural beauty year-round. Inside, you'll find a freshly painted interior in designer colours, complemented by new carpet and updated light fixtures that create a warm, stylish feel throughout. The inviting main floor features a bright living and dining area, while the convenient galley kitchen with a breakfast area makes everyday meals a pleasure and includes a direct walkout to the deck - ideal for outdoor dining and entertaining. The primary bedroom also boasts its own private walkout to the deck, offering a peaceful retreat for morning coffee or sunset relaxation. A full 4-piece bathroom completes the main level. The finished lower level adds versatility with two additional bedrooms, a large recreation room, a 2-piece bath, and laundry area - a flexible space for family or your teenagers, guests, or a home office. Step outside to enjoy a private, fully-fenced backyard, complete with an oversized shed and plenty of room for gatherings, play, or gardening. This property is situated close to parks, waterfront trails, schools, shopping, and transit, and offers not



just convenience but lifestyle. Take this rare opportunity - a home that combines space, style, and functionality, inside and out!
(SHINGLES WILL BE REPLACED BEFORE OCTOBER 6TH!!! ZONING R2) (id:6289)

Essential Information

Listing #	E12443390
Price	\$599,900
Bedrooms	3
Bathrooms	2.00
Half Baths	1
Acres	0.00
Type	Single Family
Sub-Type	Freehold
Style	Raised bungalow

Community Information

Address	1326 Valley Drive
Subdivision	Lakeview
City	Oshawa (lakeview)
Province	Ontario
Postal Code	L1J7J7

Amenities

Features	Irregular lot size
Parking Spaces	5
Parking	No Garage

Interior

Appliances	Dishwasher, Dryer, Stove, Washer, Refrigerator
Heating	Electric Baseboard heaters
# of Stories	1
Has Basement	Yes

Exterior

Exterior	Brick, Aluminum siding
Lot Description	70.6 x 110.4 FT

Foundation

Block

Listing Details

Listing Office

RE/MAX JAZZ INC.



The trademarks MLS®, Multiple Listing Service® and the associated logos are owned by The Canadian Real Estate Association (CREA) and identify the quality of services provided by real estate professionals who are members of CREA. REALTOR®. Member of CREA and more.

Listing information last updated on October 14th, 2025 at 7:47pm PDT