

\$725,000 - 432 Park Road N, Oshawa (mclaughlin)

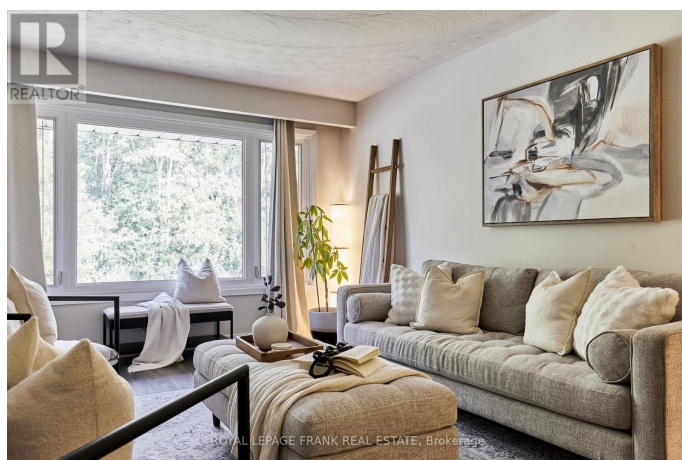
MLS® #E12439318

\$725,000

4 Bedroom, 2.00 Bathroom,
Single Family on 0.00 Acres

McLaughlin, Oshawa (mclaughlin), Ontario

Welcome to 432 Park Road North, conveniently located in Central Oshawa. This updated 3+1 bedroom raised bungalow, sits on an oversized corner lot and overlooks the Oshawa Golf and Country Club, across the street. Inside has been thoughtfully updated to make the most of the space, with an office, family room (or home theatre), additional bedroom and a full washroom in the finished basement, that can be accessed through a separate entrance under the carport, making it ideal for an in-law suite or a duplex conversion. If you'd prefer to use the space for yourself, the converted carport is the perfect place to fire up the smoker and host friends and family for some alfresco dining before relaxing and enjoying a few drinks under the gazebo or around the firepit in the large backyard, completely enclosed by privacy fencing. Back inside, you'll notice a number of unique details that separate this home from the competition. From the quartz counters in the kitchen, oversized pantry and the double sink in the family bathroom to the fireside dry bar in the theatre room, and the newly installed egress window in the basement bedroom, every effort has been made to make this home the one you have been looking for. (id:6289)



Essential Information

Listing # E12439318

Price	\$725,000
Bedrooms	4
Bathrooms	2.00
Acres	0.00
Type	Single Family
Sub-Type	Freehold
Style	Raised bungalow

Community Information

Address	432 Park Road N
Subdivision	McLaughlin
City	Oshawa (mclaughlin)
Province	Ontario
Postal Code	L1J4M5

Amenities

Amenities	Golf Nearby, Hospital, Schools, Fireplace(s)
Utilities	Cable, Electricity, Sewer
Features	Flat site, Carpet Free
Parking Spaces	3
Parking	Carport, Garage
# of Garages	2

Interior

Appliances	Water Heater, Dishwasher, Dryer, Freezer, Stove, Washer, Refrigerator
Heating	Natural gas Forced air
Cooling	Central air conditioning
Fireplace	Yes
# of Fireplaces	1
# of Stories	1
Has Basement	Yes
Basement	Separate entrance

Exterior

Exterior	Brick
Lot Description	45 x 120 FT
Foundation	Unknown

Listing Details

Listing Office

ROYAL LEPAGE FRANK REAL ESTATE



The trademarks MLS®, Multiple Listing Service® and the associated logos are owned by The Canadian Real Estate Association (CREA) and identify the quality of services provided by real estate professionals who are members of CREA. REALTOR®. Member of CREA and more.

Listing information last updated on October 13th, 2025 at 6:01pm PDT