

# \$2,100 - Bsmt - 221 Doug Finney Street, Oshawa (eastdale)

MLS® #E12436523

**\$2,100**

3 Bedroom, 2.00 Bathroom,  
Single Family

Eastdale, Oshawa (eastdale), Ontario

Tastefully Renovated 3 Bedroom Basement Apartment On Low Traffic Child Friendly Road W/Separate Entrance. Spacious Apartment Includes Laminate Flooring & Tiles Throughout, Kitchen w/Granite Counter Tops & S/S Appliances, Two 3 Piece Bath W/ Walk-In Showers & Ensuite Laundry. Conveniently Located Close To College Park Elementary School, Kingsway College, Hwy 401/407, Freshco & No Frills. Move In Ready!  
\*\* All Utilities Included In Rent \*\* (id:6289)

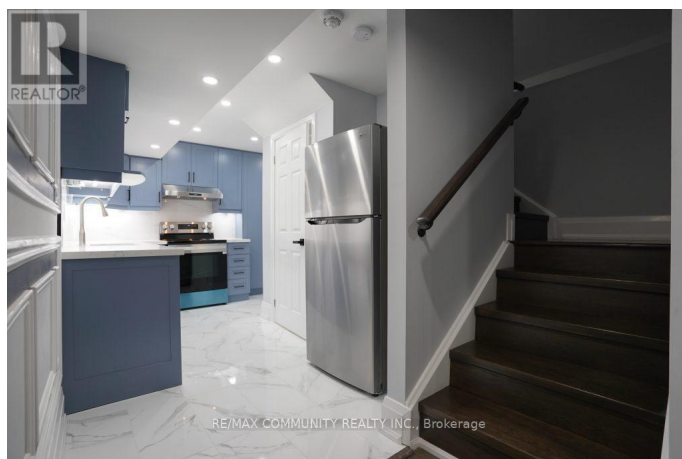
## Essential Information

Listing #	E12436523
Price	\$2,100
Bedrooms	3
Bathrooms	2.00
Type	Single Family
Sub-Type	Freehold

## Community Information

Address	Bsmt - 221 Doug Finney Street
Subdivision	Eastdale
City	Oshawa (eastdale)
Province	Ontario
Postal Code	L1K3G3

## Amenities



Features	Carpet Free
Parking Spaces	1
Parking	Attached Garage, Garage
# of Garages	2

### Interior

Appliances	Dryer, Stove, Washer, Window Coverings, Refrigerator
Heating	Natural gas Forced air
Cooling	Central air conditioning
# of Stories	2
Basement	Apartment in basement, Separate entrance

### Exterior

Exterior	Brick
Foundation	Brick

### Listing Details

Listing Office RE/MAX COMMUNITY REALTY INC.



The trademarks MLS®, Multiple Listing Service® and the associated logos are owned by The Canadian Real Estate Association (CREA) and identify the quality of services provided by real estate professionals who are members of CREA. REALTOR®. Member of CREA and more.

Listing information last updated on October 14th, 2025 at 3:16am PDT