

\$649,999 - 792 Tatra Drive, Oshawa (mclaughlin)

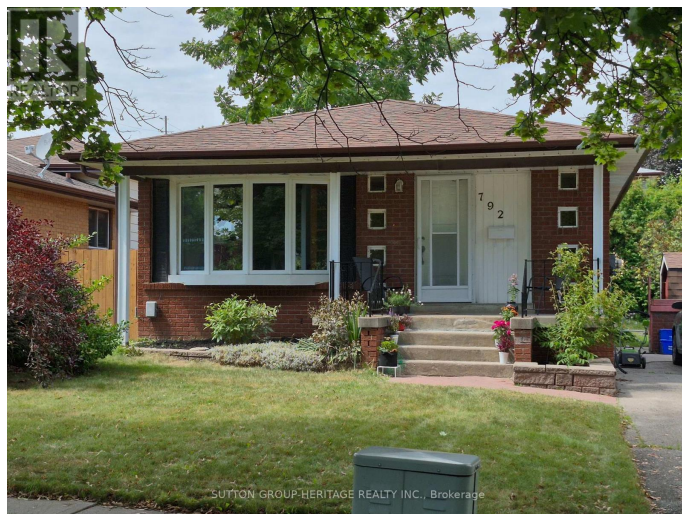
MLS® #E12425562

\$649,999

4 Bedroom, 1.00 Bathroom,
Single Family on 0.00 Acres

McLaughlin, Oshawa (mclaughlin), Ontario

Very Well Kept Bungalow in the highly sought-after family-friendly McLaughlin neighbourhood. Perfect for First-Time Home Buyers or Investors. Spacious living area naturally lit by a large bay window. Eat-in kitchen with lots of counter space for functionality and everyday living. Three well sized bedrooms and a 4-piece bathroom, making it ideal for a growing family. The basement has a recreation room with a gas fireplace, ideal for a home office, or entertainment centre. A fourth bedroom in the basement can be used as a guest room or teenage haven. Don't miss this opportunity to add your personal touch to your new home. (id:6289)



Essential Information

Listing #	E12425562
Price	\$649,999
Bedrooms	4
Bathrooms	1.00
Acres	0.00
Type	Single Family
Sub-Type	Freehold
Style	Bungalow

Community Information

Address	792 Tatra Drive
Subdivision	McLaughlin

City	Oshawa (mclaughlin)
Province	Ontario
Postal Code	L1J6S7

Amenities

Amenities	Golf Nearby, Park, Place of Worship, Public Transit, Fireplace(s)
Utilities	Cable, Electricity, Sewer
Features	Flat site
Parking Spaces	3
Parking	No Garage

Interior

Appliances	Water meter, Dryer, Hood Fan, Stove, Washer, Refrigerator
Heating	Natural gas Forced air
Cooling	Central air conditioning
Fireplace	Yes
# of Fireplaces	1
# of Stories	1
Has Basement	Yes

Exterior

Exterior	Brick
Lot Description	45 x 112 FT
Foundation	Poured Concrete

Listing Details

Listing Office	SUTTON GROUP-HERITAGE REALTY INC.
----------------	-----------------------------------



The trademarks MLS®, Multiple Listing Service® and the associated logos are owned by The Canadian Real Estate Association (CREA) and identify the quality of services provided by real estate professionals who are members of CREA. REALTOR®. Member of CREA and more.

Listing information last updated on October 14th, 2025 at 12:01pm PDT