

\$699,000 - 1344 Bradenton Path, Oshawa (eastdale)

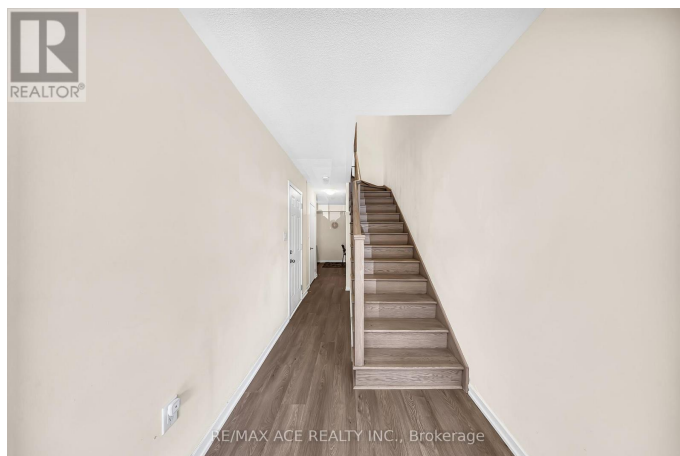
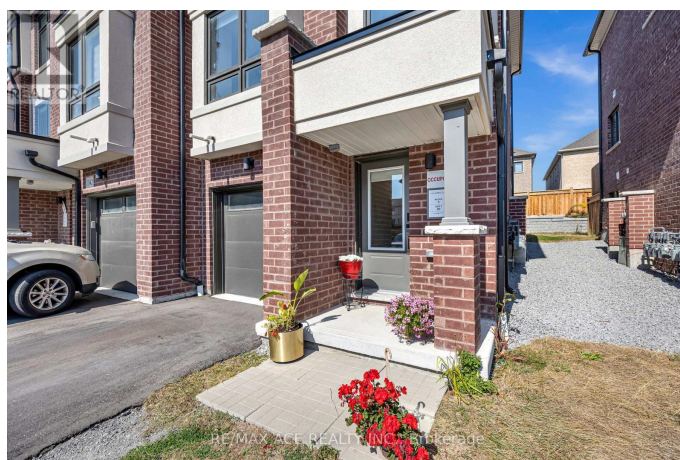
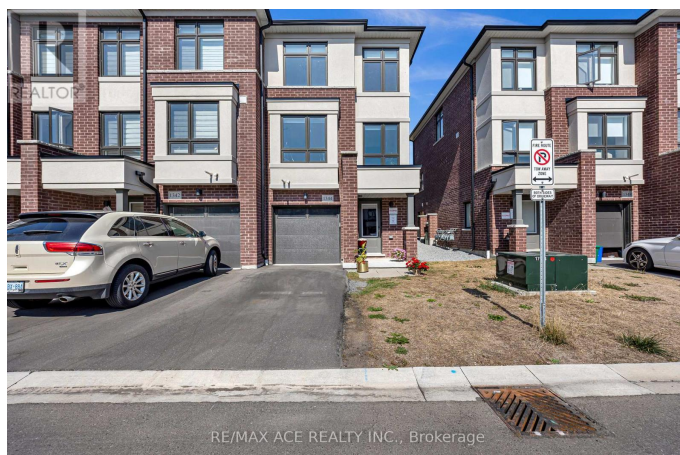
MLS® #E12421716

\$699,000

3 Bedroom, 3.00 Bathroom,
Single Family on 0.00 Acres

Eastdale, Oshawa (eastdale), Ontario

This stunning end-unit, semi-detached-style townhouse by Treasure Hill boasts large windows that flood the home with natural light. Located in the highly sought-after East Dale community, the home offers 3 bedrooms and 3 bathrooms, including a primary bedroom with a 3-piece ensuite and dual spacious walk-in closets. The open-concept main floor features a bright living and dining area, and a gourmet kitchen equipped with stainless steel appliances and a center island, perfect for cooking and entertaining. The dining area leads to a walkout deck, creating an effortless blend of indoor and outdoor living. The fully finished lower level includes a spacious, versatile room that can be used as a guest suite, additional bedroom, recreation room, or home office, thanks to its large window and abundant natural light. This townhouse is ideally situated within walking distance to schools, shopping, transit, and essential amenities such as the library. With easy access to Highway 401, this home offers both convenience and a fantastic community setting. Featuring a stunning oak staircase with premium natural finishes, Extra kitchen storage, and a dual-zone programmable thermostat for optimal heating and control. (id:6289)



Essential Information

Listing # E12421716

Price	\$699,000
Bedrooms	3
Bathrooms	3.00
Half Baths	1
Acres	0.00
Type	Single Family
Sub-Type	Freehold

Community Information

Address	1344 Bradenton Path
Subdivision	Eastdale
City	Oshawa (eastdale)
Province	Ontario
Postal Code	L1K1A9

Amenities

Amenities	Park, Hospital, Schools
Utilities	Cable, Electricity, Sewer
Parking Spaces	2
Parking	Attached Garage, Garage
# of Garages	2

Interior

Appliances	Water Heater, Water meter, Dishwasher, Dryer, Stove, Washer, Refrigerator
Heating	Natural gas Forced air
Cooling	Central air conditioning, Air exchanger, Ventilation system
# of Stories	3

Exterior

Exterior	Brick, Stucco
Exterior Features	Landscaped
Lot Description	23.1 x 88.9 FT
Foundation	Concrete

Listing Details

Listing Office	RE/MAX ACE REALTY INC.
----------------	------------------------



The trademarks MLS®, Multiple Listing Service® and the associated logos are owned by The Canadian Real Estate Association (CREA) and identify the quality of services provided by real estate professionals who are members of CREA. REALTOR®. Member of CREA and more.

Listing information last updated on October 13th, 2025 at 8:16am PDT