

\$1,600 - 2 - 119 Claymore Crescent, Oshawa (eastdale)

MLS® #E12417453

\$1,600

1 Bedroom, 1.00 Bathroom,
Single Family on 0.00 Acres

Eastdale, Oshawa (eastdale), Ontario

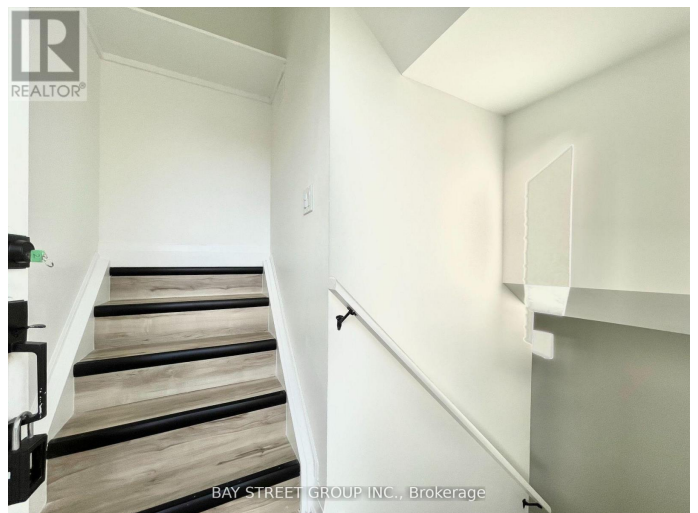
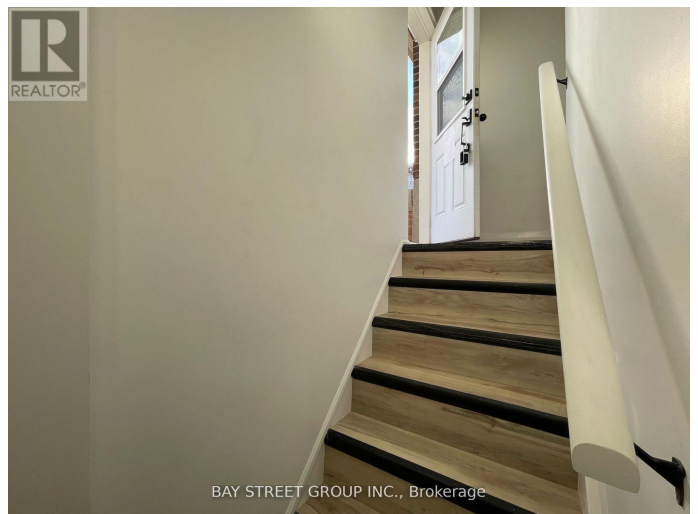
Welcome to this fully renovated, legalized one-bedroom apartment! Bright and spacious with a private separate entrance and your own ensuite laundry no sharing required, also comes with private driveway! Features brand-new appliances including stove, hood fan with microwave, dishwasher, fridge, and washer/dryer. Conveniently located just steps from shopping, dining, parks, schools, and public transit. Tenant responsible for 30% of utilities. Photos were taken prior to tenant occupancy. (id:6289)

Essential Information

Listing #	E12417453
Price	\$1,600
Bedrooms	1
Bathrooms	1.00
Acres	0.00
Type	Single Family
Sub-Type	Freehold
Style	Bungalow

Community Information

Address	2 - 119 Claymore Crescent
Subdivision	Eastdale
City	Oshawa (eastdale)
Province	Ontario
Postal Code	L1G6G3



Amenities

Parking Spaces	1
Parking	No Garage

Interior

Heating	Propane Forced air
Cooling	Central air conditioning
# of Stories	1
Basement	Apartment in basement

Exterior

Exterior	Brick
Lot Description	66.9 x 85.2 FT
Foundation	Concrete

Listing Details

Listing Office BAY STREET GROUP INC.



The trademarks MLS®, Multiple Listing Service® and the associated logos are owned by The Canadian Real Estate Association (CREA) and identify the quality of services provided by real estate professionals who are members of CREA. REALTOR®. Member of CREA and more.

Listing information last updated on October 13th, 2025 at 12:56pm PDT