

\$718,900 - 820 Bennett Crescent, Oshawa (pinecrest)

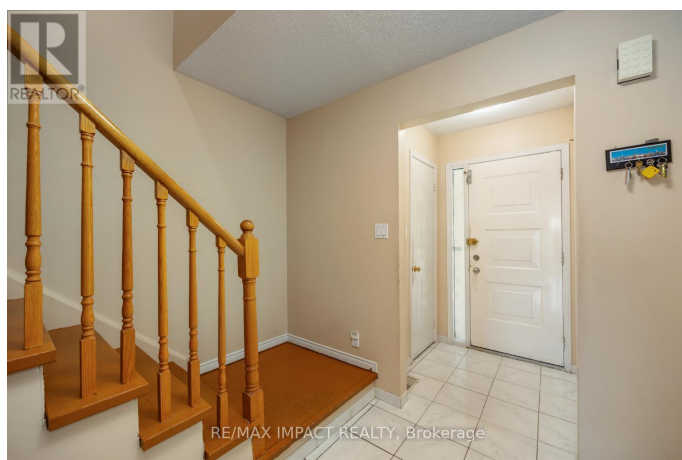
MLS® #E12406051

\$718,900

3 Bedroom, 2.00 Bathroom,
Single Family on 0.00 Acres

Pinecrest, Oshawa (pinecrest), Ontario

This spacious and well-maintained home offers nearly 1,400 sq. ft. of comfortable living space plus a mostly finished basement, tucked away on a quiet, family-friendly street just steps from parks and top-rated schools in one of North Oshawa's most desirable neighbourhoods. Step inside to a bright and functional layout, featuring a generous front foyer with a convenient 2-piece powder room and direct access to the attached garage. Durable ceramic tile flows from the entry through the hallway and into the kitchen. The family-sized, eat-in kitchen boasts an abundance of cabinetry, a large pantry, and a walkout to a 13' x 11' deck overlooking a fully fenced backyard perfect for outdoor entertaining. The spacious living room is filled with natural light from large south- and west-facing windows and features a stunning floor-to-ceiling brick wood-burning fireplace, creating a warm and inviting space to relax. Upstairs, the oversized primary bedroom includes a walk-in closet and private access to the beautifully renovated 5-piece main bathroom. The finished basement offers additional living space with a cozy rec room, plus a large separate storage area. You'll also appreciate the extra storage loft in the garage. Enjoy the convenience of side-by-side parking for two vehicles on the newly paved driveway, no more shuffling cars every morning! Easy access to Hwy 407 or Hwy 401, big box stores, restaurants and Delpark Homes Recreation Centre featuring indoor swimming, multiple ice



pads, a large fitness facility & an indoor track. The main bathroom was updated 2 yrs ago; Shingles are approx 5 yrs old; driveway was repaved 3 - 4 yrs ago. Hot water heater is only 2 yrs old and owned. This is the perfect home for growing families or anyone looking for comfort, space, and convenience in a thriving community. ** This is a linked property.**
(id:6289)

Essential Information

| | |
|------------|---------------|
| Listing # | E12406051 |
| Price | \$718,900 |
| Bedrooms | 3 |
| Bathrooms | 2.00 |
| Half Baths | 1 |
| Acres | 0.00 |
| Type | Single Family |
| Sub-Type | Freehold |

Community Information

| | |
|-------------|----------------------|
| Address | 820 Bennett Crescent |
| Subdivision | Pinecrest |
| City | Oshawa (pinecrest) |
| Province | Ontario |
| Postal Code | L1K1V4 |

Amenities

| | |
|----------------|-------------------------------------------------|
| Amenities | Golf Nearby, Park, Public Transit, Fireplace(s) |
| Features | Irregular lot size, Level |
| Parking Spaces | 3 |
| Parking | Attached Garage, Garage |
| # of Garages | 2 |

Interior

| | |
|------------|--------------------------------------------------------------|
| Appliances | Dishwasher, Dryer, Water Heater, Stove, Washer, Refrigerator |
| Heating | Natural gas Forced air |
| Cooling | Central air conditioning |

| | |
|-----------------|-----|
| Fireplace | Yes |
| # of Fireplaces | 1 |
| # of Stories | 2 |
| Has Basement | Yes |

Exterior

| | |
|-----------------|----------------------------------------------------------------------|
| Exterior | Brick, Vinyl siding |
| Lot Description | 28.1 x 99.9 FT ; irreg lot is 35.1 ft across the back under 1/2 acre |
| Foundation | Poured Concrete |

Listing Details

| | |
|----------------|----------------------|
| Listing Office | RE/MAX IMPACT REALTY |
|----------------|----------------------|



The trademarks MLS®, Multiple Listing Service® and the associated logos are owned by The Canadian Real Estate Association (CREA) and identify the quality of services provided by real estate professionals who are members of CREA. REALTOR®. Member of CREA and more.

Listing information last updated on October 11th, 2025 at 3:16pm PDT