

\$3,150 - Upper - 442 Rimosa Court, Oshawa (mclaughlin)

MLS® #E12389147

\$3,150

4 Bedroom, 3.00 Bathroom,
Single Family on 0.00 Acres

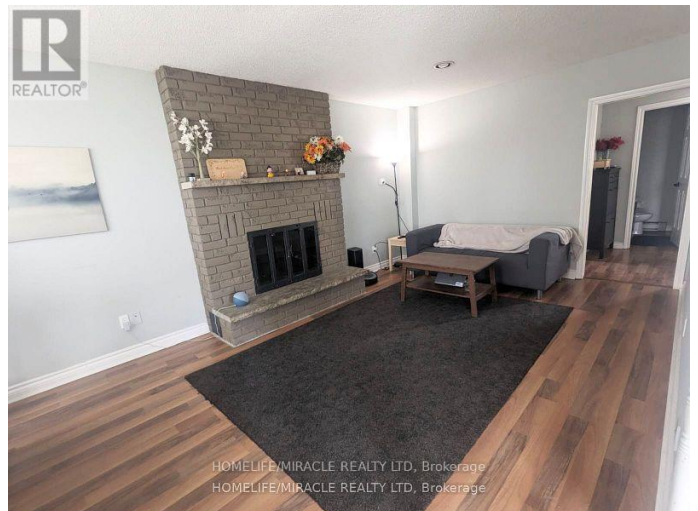
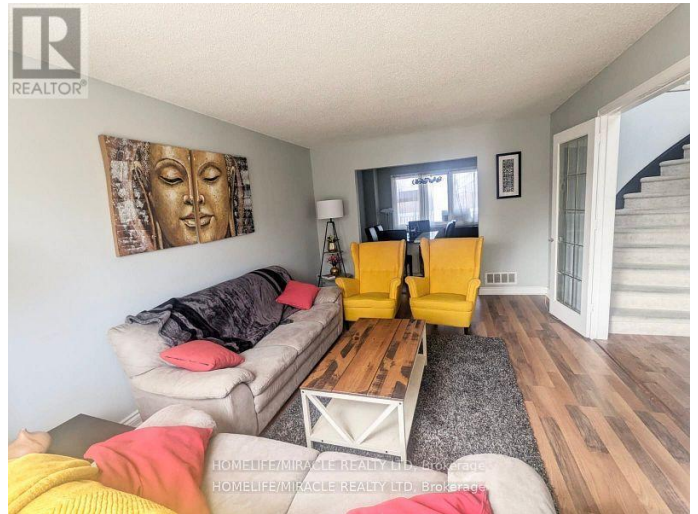
McLaughlin, Oshawa (mclaughlin), Ontario

Home W/Walking Welcome To Countryside Style Living In The City! Look No More One Of A Kind Executive Style Located On A Cul De Sac, Kids Friendly Neighborhood surrounded by Nature Rimosa Park Trails, Hiking Path. This Home features 4 Spacious BR W/ W/I Closet Including Oversize Mast W/Stunning En-Suite! Main Level Laundry W/Garage Access, 2 Car Garage Open Upgraded Counter Top & Kitchen Cabinets.S/S Appliances. 4 Playgrounds, 4 Rinks & 11 Other Are W/In A 20 Min Walk. Local Transit Buses, Rail Transit Stop < 10Km Away.10 Min To 401, The Of Whitby & Oshawa.Great Location Walking Distance To School, Parks, Shopping Mall, Transit etc.Concept, Sun-Bright, Facilities Border (id:6289)

Essential Information

Listing #	E12389147
Price	\$3,150
Bedrooms	4
Bathrooms	3.00
Half Baths	1
Acres	0.00
Type	Single Family
Sub-Type	Freehold

Community Information



Address	Upper - 442 Rimosa Court
Subdivision	McLaughlin
City	Oshawa (mclaughlin)
Province	Ontario
Postal Code	L1J7T6

Amenities

Amenities	Hospital, Public Transit, Schools
Utilities	Electricity, Sewer
Features	Cul-de-sac
Parking Spaces	4
Parking	Attached Garage, Garage
# of Garages	2

Interior

Appliances	Blinds, Dishwasher, Dryer, Stove, Washer, Refrigerator
Heating	Natural gas Forced air
Cooling	Central air conditioning
# of Stories	2
Has Basement	Yes
Basement	Walk out

Exterior

Exterior	Brick
Exterior Features	Landscaped
Lot Description	57.7 x 122.5 FT ; Queit Cul-De-Sac Location
Foundation	Concrete

Listing Details

Listing Office	HOMELIFE/MIRACLE REALTY LTD
----------------	-----------------------------



The trademarks MLS®, Multiple Listing Service® and the associated logos are owned by The Canadian Real Estate Association (CREA) and identify the quality of services provided by real estate professionals who are members of CREA. REALTOR®. Member of CREA and more.

Listing information last updated on October 12th, 2025 at 7:46am PDT