

\$963,900 - 130 William Stephenson Drive, Whitby (blue Grass Meadows)

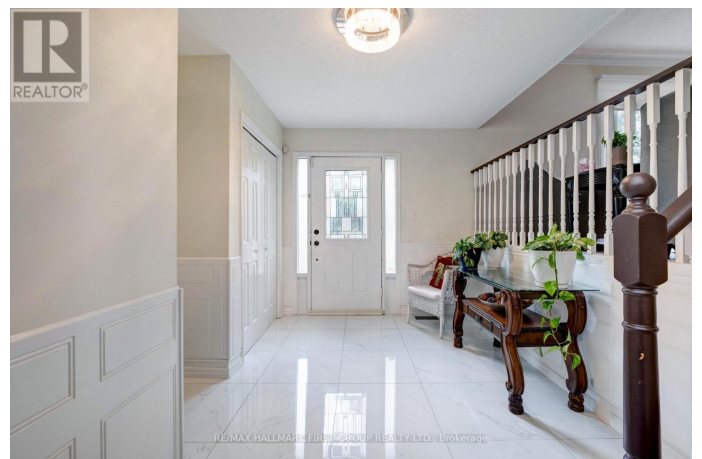
MLS® #E12386081

\$963,900

4 Bedroom, 3.00 Bathroom,
Single Family on 0.00 Acres

Blue Grass Meadows, Whitby (blue Grass Meadows), Ontario

Welcome Bluegrass Meadows and this beautifully maintained 3 bedroom, 5 level sidesplit. Home is move in ready featuring large front entrance/foyer, new hardwood flooring through living/dining rooms, kitchen & family room, modern eat-in kitchen with quartz countertops. Smart floor plan with large principle rooms, kitchen overlooks the large family room and back yard. Family room boasts gas fireplace and sliding glass walkout to the deck. New broadloom on the stairs up to 3 good size bedrooms, primary with WI closet & reno'd 3 piece ens. w/shower. Reno'd main bathroom. Level 4 features a huge rec. room & 4th bedroom - both with above grade windows. level 5 features full laundry area, plenty of storage and a cantina. Upgraded window covering(2 electric - fam & liv rooms) Parking for 4 vehicles in driveway plus garage. 50 foot lot, gates on both sides of the house lead to the private back yard big enough for large family gatherings. Include new shed and gazebo. Roof re-shingled in 2024, freshly painted throughout. Excellent curb appeal - newly done interlock walkways. Great family oriented community close to shopping, and amenities, easy access to 401/407. Home is clean, well maintained and ready to move in to. (id:6289)



Essential Information

| | |
|------------|---------------|
| Listing # | E12386081 |
| Price | \$963,900 |
| Bedrooms | 4 |
| Bathrooms | 3.00 |
| Half Baths | 1 |
| Acres | 0.00 |
| Type | Single Family |
| Sub-Type | Freehold |

Community Information

| | |
|-------------|------------------------------|
| Address | 130 William Stephenson Drive |
| Subdivision | Blue Grass Meadows |
| City | Whitby (blue Grass Meadows) |
| Province | Ontario |
| Postal Code | L1N8V1 |

Amenities

| | |
|----------------|---------------------------|
| Amenities | Fireplace(s) |
| Utilities | Cable, Electricity, Sewer |
| Parking Spaces | 5 |
| Parking | Garage |
| # of Garages | 1 |

Interior

| | |
|-----------------|-------------------------------------|
| Appliances | Water Heater, All, Window Coverings |
| Heating | Natural gas Forced air |
| Cooling | Central air conditioning |
| Fireplace | Yes |
| # of Fireplaces | 1 |
| Has Basement | Yes |

Exterior

| | |
|-------------------|-----------------|
| Exterior | Brick |
| Exterior Features | Landscaped |
| Lot Description | 50.9 x 110 FT |
| Foundation | Poured Concrete |

Listing Details

Listing Office

RE/MAX HALLMARK FIRST GROUP REALTY LTD.



The trademarks MLS®, Multiple Listing Service® and the associated logos are owned by The Canadian Real Estate Association (CREA) and identify the quality of services provided by real estate professionals who are members of CREA. REALTOR®. Member of CREA and more.

Listing information last updated on October 26th, 2025 at 5:01pm PDT