

\$3,200 - 1011 Hinterland Circuit, Oshawa (pinecrest)

MLS® #E12370542

\$3,200

3 Bedroom, 3.00 Bathroom,
Single Family

Pinecrest, Oshawa (pinecrest), Ontario

lower-level Stunning 3 Bedrooms with 4 Pce
Ensuite Washroom, On A Quiet Court End
Unit Located In Heart Of Oshawa. Backing
Onto RAVINE! Great Family Friendly
Neighborhood, Open Concept Central Island
Kitchen, High End S/S Appliances & Breakfast
Area W/O To Basement With Breathtaking
Ravine Views. Very Convenient Location,
Steps to Park, St.Joseph Catholic School, Tim
Hortons, Grocery Store, Home Depot,
Walmart, Best Buy, McDonalds, Canadian
Tire, Many Restaurants & Shops & Banks,
Gas Station. Close To 401, 407, City Transit,
Tenant pay 40% utility (id:6289)

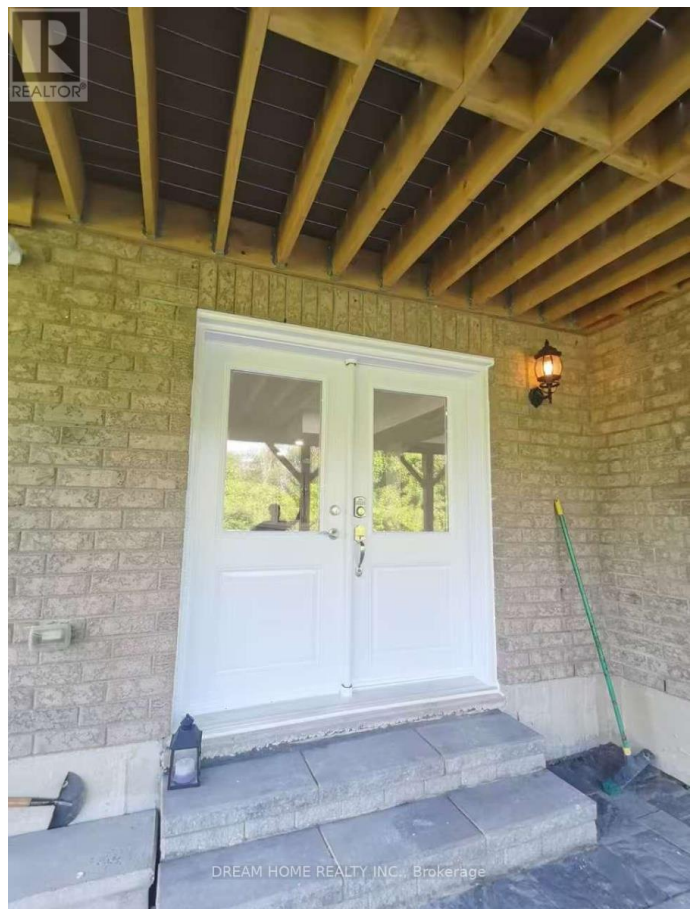
Essential Information

Listing #	E12370542
Price	\$3,200
Bedrooms	3
Bathrooms	3.00
Type	Single Family
Sub-Type	Freehold

Community Information

Address	1011 Hinterland Circuit
Subdivision	Pinecrest
City	Oshawa (pinecrest)
Province	Ontario
Postal Code	L1K2M6

Amenities



Features	Carpet Free
Parking Spaces	2
Parking	Garage
# of Garages	1

Interior

Heating	Natural gas Forced air
Cooling	Central air conditioning
# of Stories	2
Basement	Apartment in basement

Exterior

Exterior	Brick
Foundation	Block

Listing Details

Listing Office	DREAM HOME REALTY INC.
----------------	------------------------



The trademarks MLS®, Multiple Listing Service® and the associated logos are owned by The Canadian Real Estate Association (CREA) and identify the quality of services provided by real estate professionals who are members of CREA. REALTOR®. Member of CREA and more.

Listing information last updated on October 11th, 2025 at 3:16pm PDT