

\$2,000 - Basement - 332 Fleetwood Drive, Oshawa (eastdale)

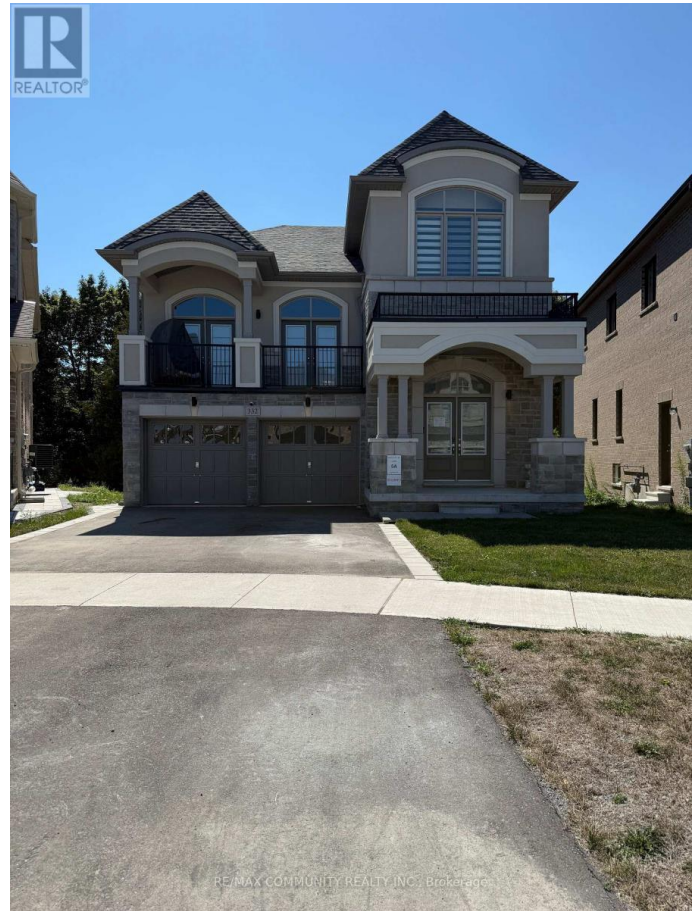
MLS® #E12369975

\$2,000

2 Bedroom, 2.00 Bathroom,
Single Family

Eastdale, Oshawa (eastdale), Ontario

Charming and well-maintained legal walk-out basement apartment featuring 2 spacious bedroom, a cozy kitchen, and 2 modern 3-piece bathroom. This inviting unit offers a private entrance, an abundance of natural light, and a practical layout, making it an excellent choice for singles or couples. Conveniently located close to amenities and public transit, this rental is perfect for those seeking a comfortable and affordable living space. (id:6289)



Essential Information

Listing #	E12369975
Price	\$2,000
Bedrooms	2
Bathrooms	2.00
Type	Single Family
Sub-Type	Freehold

Community Information

Address	Basement - 332 Fleetwood Drive
Subdivision	Eastdale
City	Oshawa (eastdale)
Province	Ontario
Postal Code	L1K3G2

Amenities

Parking Spaces 1
Parking Garage, No Garage
of Garages 1

Interior

Appliances Dishwasher, Dryer, Stove, W
Heating Natural gas Forced air
Cooling Central air conditioning
of Stories 2
Has Basement Yes
Basement Apartment in basement, Walk

Exterior

Exterior Brick, Stone
Foundation Poured Concrete

Listing Details

Listing Office RE/MAX COMMUNITY REALTY



The trademarks MLS®, Multiple Listing Service® and the associated logos are owned by The Canadian Real Estate Association (CREA) and identify the quality of services provided by real estate professionals who are members of CREA. REALTOR®. Member of CREA and more.

Listing information last updated on October 14th, 2025 at 2:46am PDT

