

# \$299,900 - Lot 6 Coleman Crescent, Scugog

MLS® #E12277794

**\$299,900**

0 Bedroom, 0.00 Bathroom,  
Vacant Land on 0.00 Acres

Rural Scugog, Scugog, Ontario

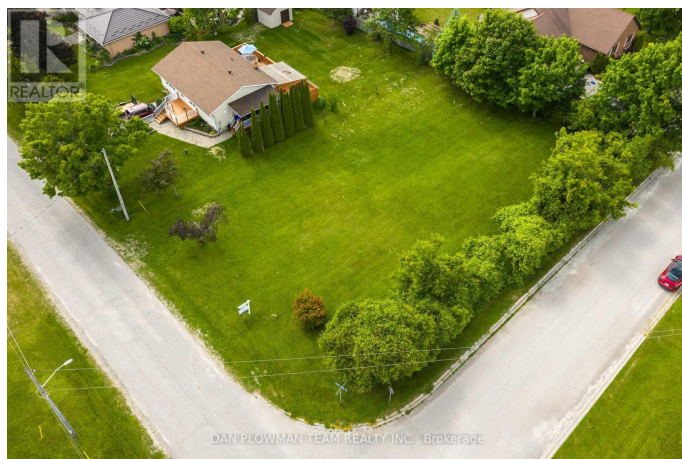
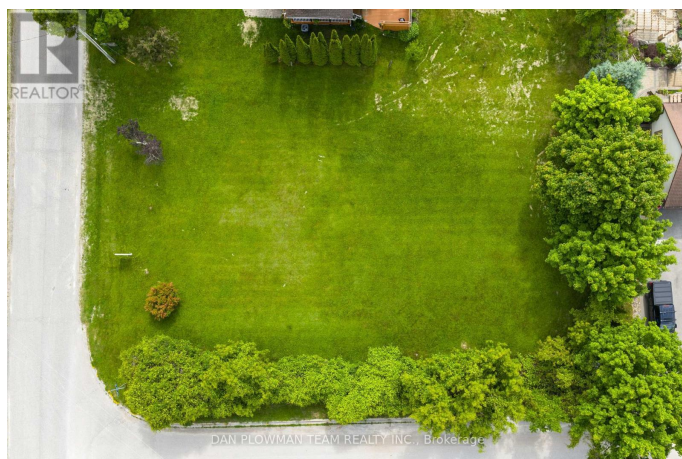
Fantastic Opportunity To Build Your Custom Home On This 100 X 150 Ft Residential Building Lot In The Quiet, Family-Friendly Community Of Janetville. Situated Just North Of The Village Core, This Level And Partially Cleared Lot Offers A Peaceful Rural Setting Surrounded By Mature Trees And Open Countryside. Enjoy The Charm Of Small-Town Living With Convenient Access To Lindsay, Port Perry, And Hwy 35 - Perfect For Commuters Or Those Seeking A Slower Pace Of Life. Cable, Gas and Hydro Available At The Lot Line. Zoned Residential. A Rare Chance To Invest In A Growing Area Known For Its Natural Beauty, Privacy, And Lifestyle Appeal. (id:6289)

## Essential Information

Listing #	E12277794
Price	\$299,900
Bathrooms	0.00
Acres	0.00
Type	Vacant Land

## Community Information

Address	Lot 6 Coleman Crescent
Subdivision	Rural Scugog
City	Scugog
Province	Ontario
Postal Code	L0B1K0



## Amenities

Utilities	Cable, Electricity
Parking	No Garage

## Exterior

Lot Description	100.02 x 150.03 FT under 1/2 acre
-----------------	-----------------------------------

## Listing Details

Listing Office	DAN PLOWMAN TEAM REALTY INC.
----------------	------------------------------



The trademarks MLS®, Multiple Listing Service® and the associated logos are owned by The Canadian Real Estate Association (CREA) and identify the quality of services provided by real estate professionals who are members of CREA. REALTOR®. Member of CREA and more.

Listing information last updated on October 13th, 2025 at 1:31pm PDT