

\$ - 205 - 310 Simcoe Street S, Oshawa (central)

MLS® #E12247853

\$

0 Bedroom, 2.00 Bathroom, 1,150 sqft

Office on 0.00 Acres

Central, Oshawa (central), Ontario

Affordable + Convenient Professional Space in Oshawa close to HWY 401 & Future GO Station. Zoning allows both office + personal services and school type uses: flexible for multiple kinds of businesses! Building includes good parking + common washrooms & elevator access. Easy & Quick access to HWY 401, and close to rapidly growing Downtown Oshawa + Future GO Station. Good choice for lawyers, accountants, classes + seminars, and more. Considerable move-in incentives available for qualified Tenants leasing on qualified terms. (id:6289)

Essential Information

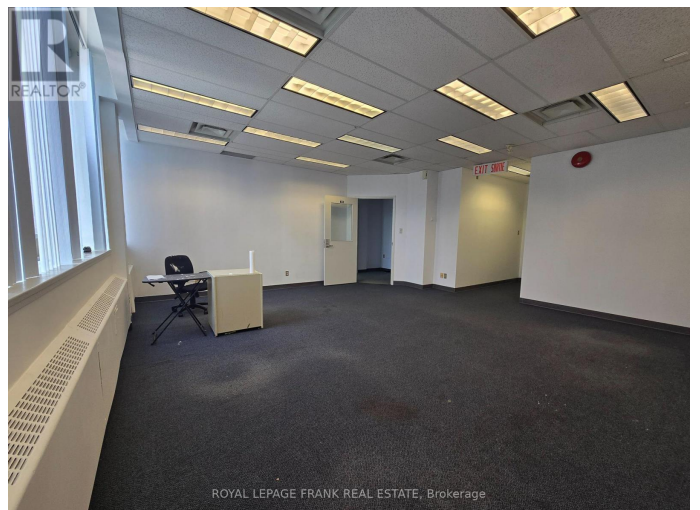
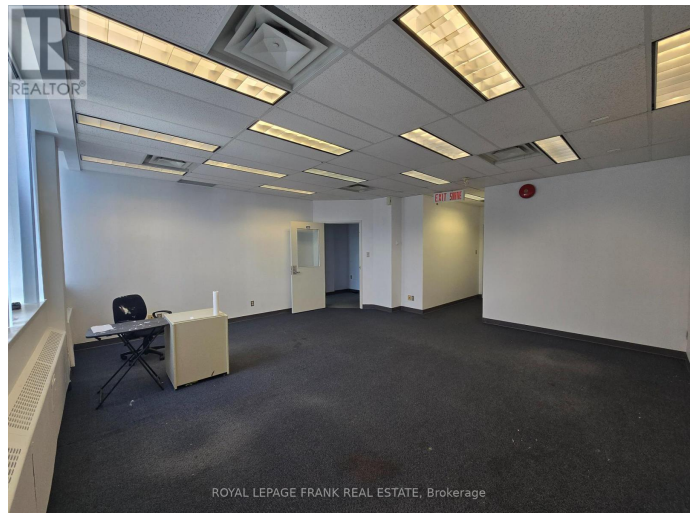
Listing #	E12247853
Bathrooms	2.00
Square Footage	1,150
Acres	0.00
Type	Office

Community Information

Address	205 - 310 Simcoe Street S
Subdivision	Central
City	Oshawa (central)
Province	Ontario
Postal Code	L1H4H7

Amenities

Amenities	Public Transit
-----------	----------------



Features

Elevator

Interior

Heating

Natural gas Forced air

Cooling

Fully air conditioned

Listing Details

Listing Office

ROYAL LEPAGE FRANK REAL ESTATE



The trademarks MLS®, Multiple Listing Service® and the associated logos are owned by The Canadian Real Estate Association (CREA) and identify the quality of services provided by real estate professionals who are members of CREA. REALTOR®. Member of CREA and more.

Listing information last updated on October 14th, 2025 at 3:16pm PDT