

# \$699,000 - 260 Athol Street E, Oshawa (central)

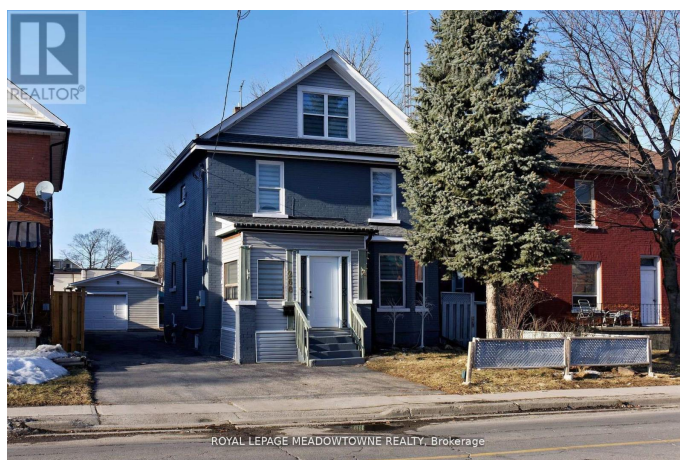
MLS® #E12130194

**\$699,000**

6 Bedroom, 3.00 Bathroom,  
Single Family on 0.00 Acres

Central, Oshawa (central), Ontario

Welcome to this beautifully renovated 3-storey detached home, offering 1,384 sqft of above-grade living space, designed to meet the needs of today's modern family. Located in the heart of Central Oshawa, this home is perfect for large families or those seeking multi-generational living. Step inside to discover an open-concept main floor that is ideal for seamless living and entertaining. The stylish and functional kitchen features top-of-the-line appliances, ample storage, and plenty of space to create culinary masterpieces while enjoying time with loved ones. This home boasts 6 spacious bedrooms (5+1) and 3 pristine bathrooms, providing ample space for everyone to relax and unwind. High-end finishes throughout elevate the space, combining luxury with everyday comfort. The huge, fenced-in backyard is a perfect retreat for outdoor activities, gardening, or simply relaxing in privacy. And with parking for up to 8 cars, you'll never have to worry about space for guests or family vehicles. This home truly has it all modern, spacious, and designed for both comfort and style. Don't miss out on the opportunity to own this gem in Central Oshawa. Book your showing today! (id:6289)



## Essential Information

Listing #	E12130194
Price	\$699,000

Bedrooms	6
Bathrooms	3.00
Half Baths	1
Acres	0.00
Type	Single Family
Sub-Type	Freehold

### Community Information

Address	260 Athol Street E
Subdivision	Central
City	Oshawa (central)
Province	Ontario
Postal Code	L1H1K3

### Amenities

Amenities	Park, Place of Worship, Public Transit, Schools
Features	Carpet Free
Parking Spaces	8
Parking	Detached Garage, Garage
# of Garages	2

### Interior

Appliances	Dishwasher, Dryer, Stove, Washer, Window Coverings, Refrigerator
Heating	Natural gas Forced air
Cooling	Central air conditioning
# of Stories	3
Has Basement	Yes

### Exterior

Exterior	Brick, Vinyl siding
Lot Description	39.9 x 127.3 FT under 1/2 acre
Foundation	Concrete

### Listing Details

Listing Office	ROYAL LEPAGE MEADOWTOWNE REALTY
----------------	---------------------------------



Association (CREA) and identify the quality of services provided by real estate professionals who are members of CREA. REALTOR®. Member of CREA and more.

Listing information last updated on October 12th, 2025 at 8:16pm PDT