

# \$225,000 - 5384 Len Thompson Drive, Lacombe

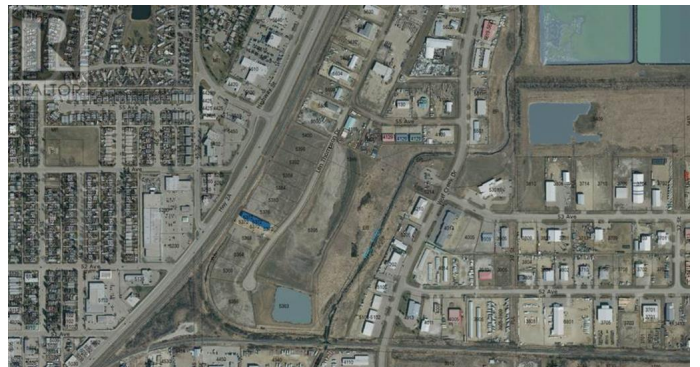
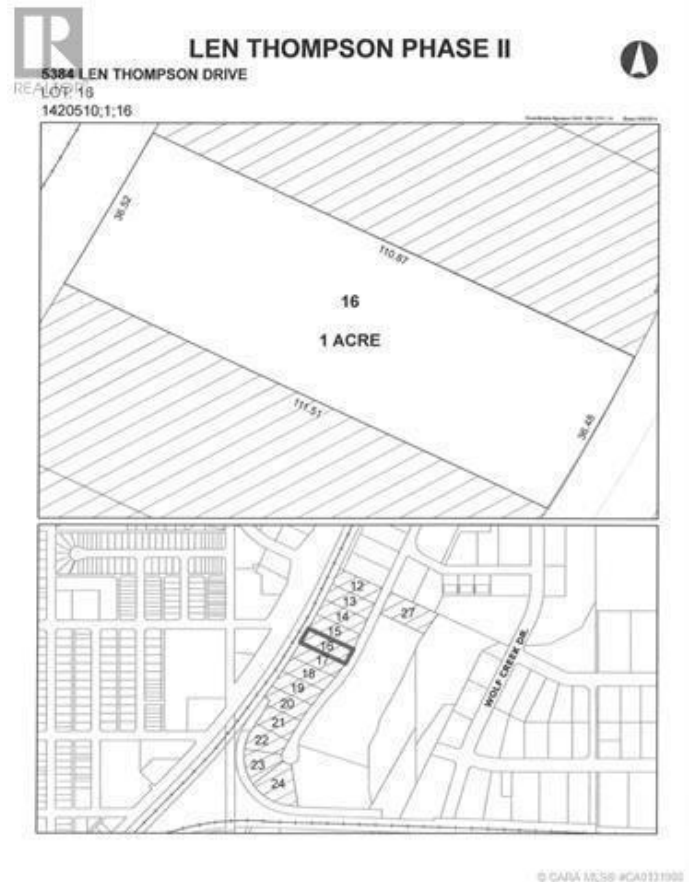
MLS® #CA0131980

**\$225,000**

0 Bedroom, 0.00 Bathroom,  
Industrial on 1.00 Acres

Wolf Creek Industrial Park, Lacombe, Alberta

Len Thompson Industrial Park. New 15 acre industrial park strategically located in the heart of Lacombe's industrial area and will soon be home to Lacombe's new Public Works shop and yard site. Features highway exposure, access and visibility. Conveniently located next to major regional highways. Lots are zoned light industrial which provides for a large variety of permitted and discretionary uses. Subdivision is paved, shovel ready with street lights and services to lot. Currently lots are 1 to 1.5 acres in size but if you need to amalgamate 1 or more lots to make your business plan work that is easy to do. Come take a look at the City of Lacombe and its newest industrial subdivision where your business needs will be met and thrive for years to come. Note the City is also willing to look at selling a separate 7 to 10 acre parcel. (id:6289)



## Essential Information

Listing #	CA0131980
Price	\$225,000
Bathrooms	0.00
Acres	1.00
Type	Industrial
Sub-Type	Freehold

## Community Information

Address	5384 Len Thompson Drive
---------	-------------------------

Subdivision	Wolf Creek Industrial Park
City	Lacombe
Province	Alberta
Postal Code	T4L2H3

### **Listing Details**

Listing Office	Royal LePage Lifestyles Realty
----------------	--------------------------------



The trademarks MLS®, Multiple Listing Service® and the associated logos are owned by The Canadian Real Estate Association (CREA) and identify the quality of services provided by real estate professionals who are members of CREA. REALTOR®. Member of CREA and more.

Listing information last updated on October 12th, 2025 at 12:31am PDT