

\$1,320,000 - 1 22722 Lougheed Highway, Maple Ridge

MLS® #C8059632

\$1,320,000

0 Bedroom, 0.00 Bathroom, 1,108 sqft

Retail

N/A, Maple Ridge, British Columbia

It is C-3 (Town Centre Commercial) zoning property and allows for wide variety of uses including financial service, convenience store, personal services, professional services, retails sales, etc. It is the best location for Doctors, Dentists, Health Service Providers, Accountants, Lawyers in the center part of Maple Ridge. Currently it is occupied by tenant running Salon and SPA , with full air conditioning, 5 Parking stalls (4 parking stalls in front of the unit and one underground security parking stall # 75). Call today for more information or a tour. (id:6289)

Built in 1993

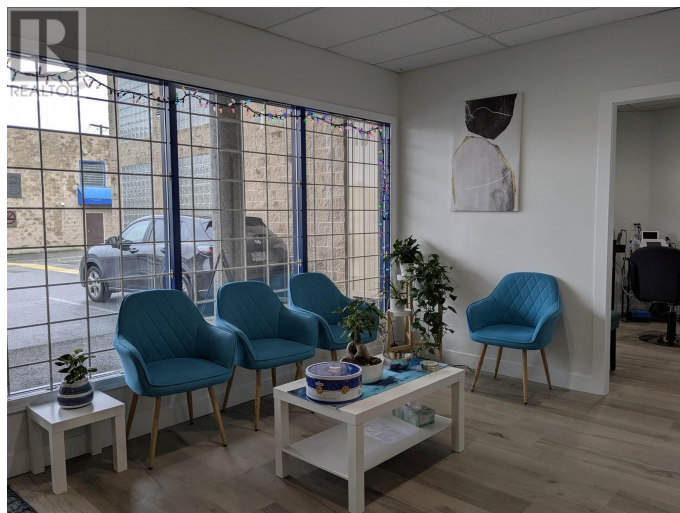
Essential Information

Listing #	C8059632
Price	\$1,320,000
Bathrooms	0.00
Square Footage	1,108
Year Built	1993
Type	Retail

Community Information

Address	1 22722 Lougheed Highway
Subdivision	N/A
City	Maple Ridge
Province	British Columbia
Postal Code	V2X2V6

Listing Details



Listing Office

Royal Pacific Realty (Kingsway) Ltd.



The trademarks MLS®, Multiple Listing Service® and the associated logos are owned by The Canadian Real Estate Association (CREA) and identify the quality of services provided by real estate professionals who are members of CREA. REALTOR®. Member of CREA and more.

Listing information last updated on October 14th, 2025 at 9:46pm PDT