

\$1,573,000 - A312 4899 Vanguard Road, Richmond

MLS® #C8056306

\$1,573,000

0 Bedroom, 0.00 Bathroom, 2,806 sqft

Industrial on 0.06 Acres

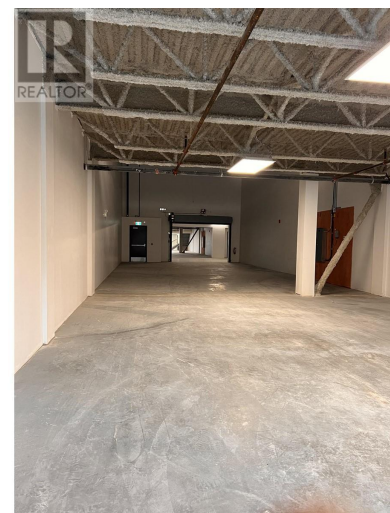
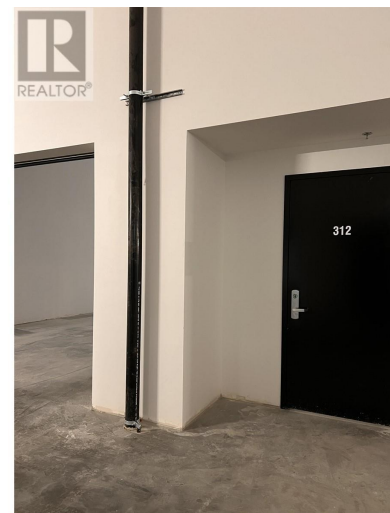
N/A, Richmond, British Columbia

KEY FEATURES:- 22'clear ceiling heights
PRIVATE 1 Grade/dock loading doors per unit
ESFR Sprinkler system included High efficiency LED lighting system 100 amp 600 volts, 3-Phase electrical service per unit
Rough-in plumbing for washrooms included
Modern architectural design offers strong corporate image Ample glazing allowing an abundance of natural light
Regards Electricity and plumbing including Each unit. Building has 2 commercial Service Elevators, 3rd elevator for 6 people Very Close to YVR international airport
ADDITIONAL GOLDEN POINT :- Each unit has 2 story (main floor and MEZZANINE)
CAN BE RENTED TO TWO SEPARATE TENANTS.
PARKING:- Total 8 (#62, 63,64,65,66,67,68 & #69) parking between both units Plus visitor parking available
PUBLIC TRANSPORTATION: 405 Busline - No.5 Road & Cambie 410 Busline - 22nd Street Station & Queens Borough C96 Busline to E Cambie & Brighthouse Station Canada Line Aberdeen Station via 410 Busline ** This unit is on 2nd floor of this 2 story building. (id:6289)

Built in 2023

Essential Information

Listing #	C8056306
Price	\$1,573,000
Bathrooms	0.00
Square Footage	2,806



Acres	0.06
Year Built	2023
Type	Industrial

Community Information

Address	A312 4899 Vanguard Road
Subdivision	N/A
City	Richmond
Province	British Columbia
Postal Code	V6X2P8

Amenities

Utilities	Electricity, Sewer
Features	Dock height loading, Passenger elevator

Listing Details

Listing Office	Royal Pacific Realty Corp.
----------------	----------------------------



The trademarks MLS®, Multiple Listing Service® and the associated logos are owned by The Canadian Real Estate Association (CREA) and identify the quality of services provided by real estate professionals who are members of CREA. REALTOR®. Member of CREA and more.

Listing information last updated on October 12th, 2025 at 11:16pm PDT