

\$2,900 - 1810 - 3 Gloucester Street, Toronto (church-Yonge Corridor)

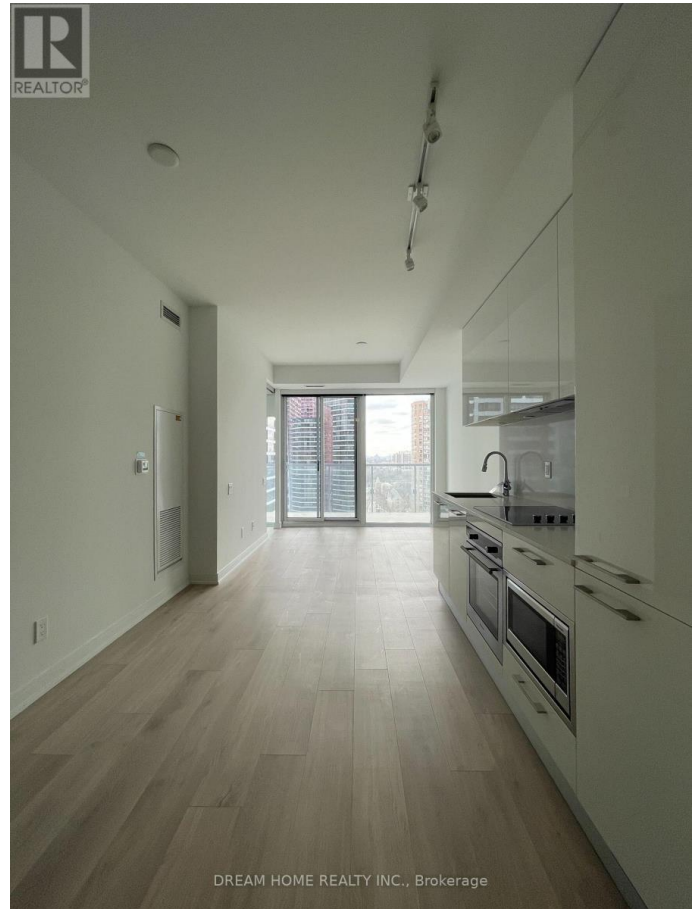
MLS® #C12458696

\$2,900

2 Bedroom, 2.00 Bathroom,
Single Family

Church-Yonge Corridor, Toronto
(church-Yonge Corridor), Ontario

Luxurious "Gloucester On Yonge" W/Direct Access To Wellesley Subway. Great Design & Amenities (Rooftop Pool, Fitness, Theatre Rm, Etc) Bright And Spacious 2 Bedroom, 2 Bathroom Unit W/High 9 Foot Ceilings. Built-In Closet Org Sys, Quality Durable Designer For Thru-Out. Huge Balcony W/ Clear View. Concord Biospace Offers Air-Clean Filtration Sys & Water Leak Detection Sys. Touchless Building Entry & Elevator E-Calling Tech. Steps Away From Yorkville, U Of T, Hospitals & Eaton Centre. (id:6289)



Essential Information

Listing #	C12458696
Price	\$2,900
Bedrooms	2
Bathrooms	2.00
Type	Single Family
Sub-Type	Condominium/Strata

Community Information

Address	1810 - 3 Gloucester Street
Subdivision	Church-Yonge Corridor
City	Toronto (church-Yonge Corridor)
Province	Ontario
Postal Code	M4Y1L8



Amenities

Amenities	Security/Concierge, Party Room
Features	Balcony, Carpet Free
Parking	No Garage
Has Pool	Yes
Pool	Outdoor pool

Interior

Appliances	Cooktop, Dishwasher, Dryer, Microwave, Oven, Hood Fan, Washer, Refrigerator
Heating	Natural gas Forced air
Cooling	Central air conditioning

Exterior

Exterior	Brick, Concrete
----------	-----------------

Listing Details

Listing Office	DREAM HOME REALTY INC.
----------------	------------------------



The trademarks MLS®, Multiple Listing Service® and the associated logos are owned by The Canadian Real Estate Association (CREA) and identify the quality of services provided by real estate professionals who are members of CREA. REALTOR®. Member of CREA and more.

Listing information last updated on October 15th, 2025 at 3:16am PDT