

\$780,000 - 1605 - 81 Wellesley Street E, Toronto (church-Yonge Corridor)

MLS® #C12458160

\$780,000

2 Bedroom, 2.00 Bathroom,
Single Family

Church-Yonge Corridor, Toronto
(church-Yonge Corridor), Ontario

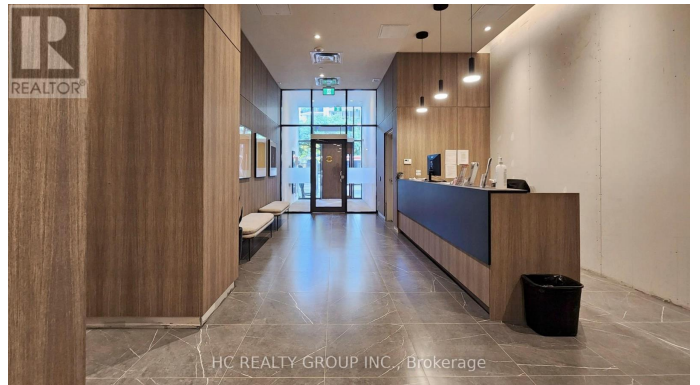
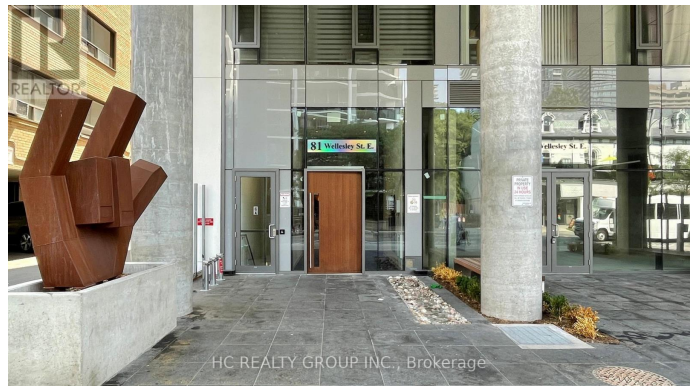
Welcome to Unit 1605 at 81 Wellesley your new home in the heart of downtown Toronto. This bright and elegant 2-bedroom, 2-bath condo offers modern comfort with floor-to-ceiling windows, a sleek custom kitchen, and an open-concept layout filled with natural light. Step onto your private balcony and enjoy the city skyline from the 16th floor. Built in 2023, the building offers great amenities: a fitness centre, a lounge, and a terrace. You are just steps from transit, dining, and shopping. Parking included. (id:6289)

Essential Information

Listing #	C12458160
Price	\$780,000
Bedrooms	2
Bathrooms	2.00
Type	Single Family
Sub-Type	Condominium/Strata

Community Information

Address	1605 - 81 Wellesley Street E
Subdivision	Church-Yonge Corridor
City	Toronto (church-Yonge Corridor)
Province	Ontario
Postal Code	M4Y1H8



Amenities

Features	Balcony, Carpet Free
Parking Spaces	1
Parking	No Garage, Underground

Interior

Appliances	Oven - Built-In
Heating	Natural gas Forced air
Cooling	Central air conditioning

Exterior

Exterior	Concrete
----------	----------

Listing Details

Listing Office	HC REALTY GROUP INC.
----------------	----------------------



The trademarks MLS®, Multiple Listing Service® and the associated logos are owned by The Canadian Real Estate Association (CREA) and identify the quality of services provided by real estate professionals who are members of CREA. REALTOR®. Member of CREA and more.

Listing information last updated on October 14th, 2025 at 8:16am PDT