

\$760,000 - 2410 - 5500 Yonge Street, Toronto (willowdale West)

MLS® #C12456152

\$760,000

2 Bedroom, 2.00 Bathroom,
Single Family

Willowdale West, Toronto (willowdale West),
Ontario

Prime Location Near Yonge And Finch!
Stunning 2 Bedroom, 2 Bathroom Corner Unit
In The Heart Of North York With 950 Sq Ft Of
Living Space! Steps To Finch Subway Station
And Many Retail Stores. The Oversized Wrap
Around Terrace Is Included, Bright And
Spacious Dining Area. One Parking And One
Locker Included. (id:6289)

Essential Information

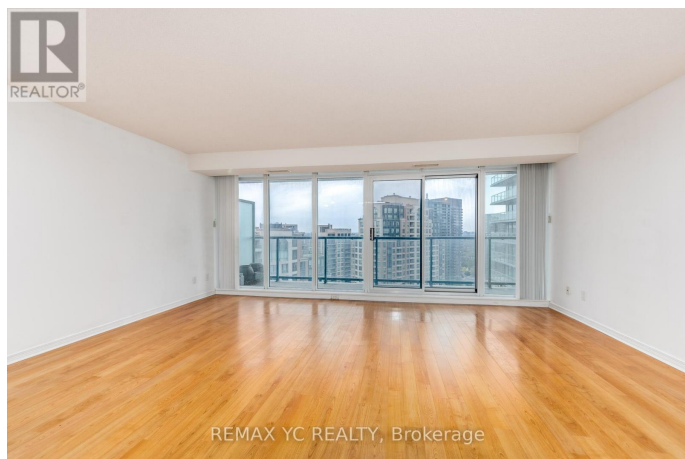
Listings #	C12456152
Price	\$760,000
Bedrooms	2
Bathrooms	2.00
Type	Single Family
Sub-Type	Condominium/Strata

Community Information

Address	2410 - 5500 Yonge Street
Subdivision	Willowdale West
City	Toronto (willowdale West)
Province	Ontario
Postal Code	M2N7L1

Amenities

Amenities	Storage - Locker
Features	Balcony



Parking Spaces	1
Parking	Garage, Underground
# of Garages	1

Interior

Heating	Natural gas Forced air
Cooling	Central air conditioning

Exterior

Exterior	Concrete
----------	----------

Listing Details

Listing Office	REMAX YC REALTY
----------------	-----------------



The trademarks MLS®, Multiple Listing Service® and the associated logos are owned by The Canadian Real Estate Association (CREA) and identify the quality of services provided by real estate professionals who are members of CREA. REALTOR®. Member of CREA and more.

Listing information last updated on October 13th, 2025 at 1:46am PDT