

\$649,900 - 302 - 330 Adelaide Street E, Toronto (moss Park)

MLS® #C12447638

\$649,900

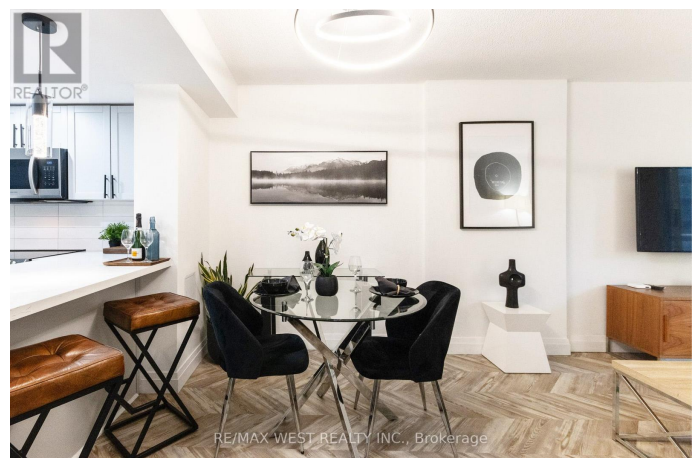
2 Bedroom, 2.00 Bathroom,
Single Family

Moss Park, Toronto (moss Park), Ontario

Welcome to your urban retreat in the heart of the city! This stunning 2 bedroom, 2 bathroom + Locker condo offers a perfect blend of contemporary design and practical functionality, making it the ideal place to call home. New flooring throughout that not only adds a touch of elegance but also ensures easy maintenance and durability. The thoughtful layout maximizes space and natural light, creating a bright and inviting atmosphere that's perfect for both relaxing and entertaining. Full-sized Kitchen equipped with stainless steel appliances and ample counter space, making meal prep a breeze. Whether you're enjoying your morning coffee at the breakfast bar or hosting dinner parties with friends. Conveniently located, this condo offers easy access to shopping, dining, entertainment, and public transit, allowing you to experience the best that city living has to offer. Experience urban living at its finest! (id:6289)

Essential Information

Listing #	C12447638
Price	\$649,900
Bedrooms	2
Bathrooms	2.00
Type	Single Family



Sub-Type Condominium/Strata

Community Information

Address 302 - 330 Adelaide Street E
Subdivision Moss Park
City Toronto (moss Park)
Province Ontario
Postal Code M5A4S9

Amenities

Amenities Park, Public Transit, Exercise Centre, Party Room, Storage - Locker
Features Balcony, Carpet Free, In suite Laundry
Parking No Garage

Interior

Appliances Dishwasher, Dryer, Stove, Window Coverings, Refrigerator
Heating Natural gas Heat Pump
Cooling Central air conditioning

Exterior

Exterior Concrete

Listing Details

Listing Office RE/MAX WEST REALTY INC.



The trademarks MLS®, Multiple Listing Service® and the associated logos are owned by The Canadian Real Estate Association (CREA) and identify the quality of services provided by real estate professionals who are members of CREA. REALTOR®. Member of CREA and more.

Listing information last updated on October 14th, 2025 at 12:01pm PDT