

\$1,089,000 - 231 Shawnee Circle, Toronto (pleasant View)

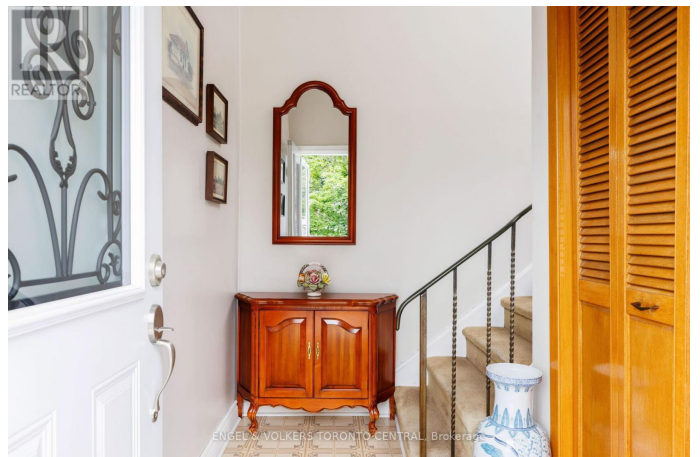
MLS® #C12303116

\$1,089,000

5 Bedroom, 3.00 Bathroom,
Single Family on 0.00 Acres

Pleasant View, Toronto (pleasant View),
Ontario

Welcome to this exceptionally spacious and well-maintained five-level backsplit, nestled in the highly sought-after and family-friendly Pleasant View neighbourhood. This home has been lovingly cared for by the same owners for over 40 years and offers an incredible opportunity for multigenerational living or rental potential with a self-contained basement suite featuring its own separate entrance. The main residence offers over 2,900 square feet of living space with three spacious bedrooms and one large den that can easily function as additional bedrooms or office spaces. The main level features a formal dining room with Hardwood under carpet, a family-sized kitchen, and a large, sun-filled family room overlooking the backyard. There are also multiple walkouts leading to two balconies, a patio, and a side yard perfect for both relaxing and entertaining. The lower-level apartment includes a generously sized eat-in kitchen that flows into the combined living and dining area, a large comfortable bedroom & three-piece bathroom, with ensuite laundry. This level is bright and functional, offering privacy and independence from the rest of the home. Additional highlights include two fireplaces, two full kitchens, and large cantina. The home has been updated over the years. Outside, you'll find an large garden shed with a concrete floor, ideal for storage or a workshop.



The property is ideally located just minutes from Seneca College, as well as public and Catholic elementary schools, with quick access to Highways 401, 404, and the DVP, making commuting a breeze. This is a rare opportunity to own a versatile and spacious home in one of Torontos most desirable neighbourhoods. Don't miss your chance to make it your own. (id:6289)

Essential Information

Listing #	C12303116
Price	\$1,089,000
Bedrooms	5
Bathrooms	3.00
Acres	0.00
Type	Single Family
Sub-Type	Freehold

Community Information

Address	231 Shawnee Circle
Subdivision	Pleasant View
City	Toronto (pleasant View)
Province	Ontario
Postal Code	M2H2Y3

Amenities

Amenities	Public Transit, Schools, Fireplace(s)
Utilities	Cable, Electricity, Sewer
Features	Paved yard
Parking Spaces	3
Parking	Garage
# of Garages	1

Interior

Appliances	Central Vacuum, Dishwasher, Dryer, Hood Fan, Two stoves, Two Washers, Window Coverings, Two Refrigerators
Heating	Natural gas Forced air
Cooling	Central air conditioning

Fireplace	Yes
Basement	Apartment in basement, Separate entrance

Exterior

Exterior	Brick
Exterior Features	Landscaped
Lot Description	30 x 150.2 FT
Foundation	Block

Listing Details

Listing Office	ENGEL & VOLKERS TORONTO CENTRAL
----------------	---------------------------------



The trademarks MLS®, Multiple Listing Service® and the associated logos are owned by The Canadian Real Estate Association (CREA) and identify the quality of services provided by real estate professionals who are members of CREA. REALTOR®. Member of CREA and more.

Listing information last updated on October 13th, 2025 at 7:46am PDT