

\$1,198,000 - 25 Dundonald Street, Toronto **(church-Yonge Corridor)**

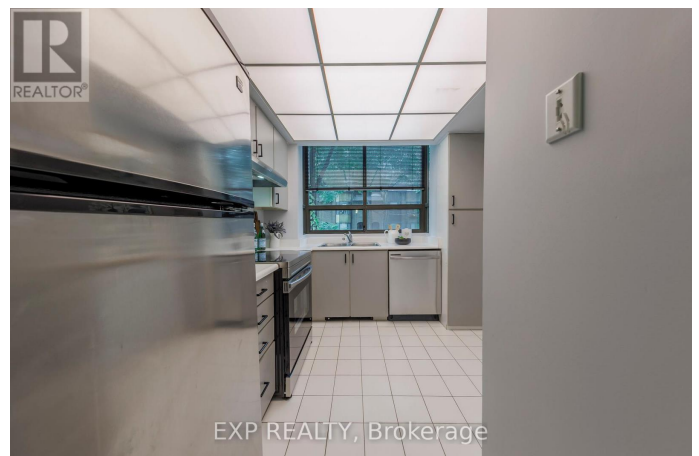
MLS® #C12295516

\$1,198,000

4 Bedroom, 3.00 Bathroom,
Single Family

Church-Yonge Corridor, Toronto
(church-Yonge Corridor), Ontario

An incredibly rare opportunity to own a townhouse on this gorgeous, tree-lined street in the heart of Old Toronto, fully surrounded by the city lifestyle and best in food, entertainment, shops and restaurants! Wonderfully connected, you have excellent schools, steps from a plethora of park space, bikeable, walkable and truly city-life saturated! Terrace Court was developed in 1985, this mid-rise Toronto condo is steps from Wellesley Station, in Downtown's Church St. Corridor neighbourhood. Terrace Court is a 9 storey condo, located at 19 Dundonald Street. This Toronto condo has 36 units with a small bank of rarely-offered condo townhouses. Suites use heat pumps for heating/cooling. New Wellesley Station access next door at 17 Dundonald. Walk through James Canning Gardens with huge, beautiful trees right through to a great lively pub with incredible patio at the Artful Dodge on Isabella St. Just past Church at the top of Dundonald is Barbara Hall Park, A small park on Church Street north of Wellesley Street East featuring a fenced-in splash pad, a fenced Dogs Off-Leash Area and an AIDS Memorial. The park is next to the 519 Community Centre, which hosts events in the park during Pride Week and throughout the year. Nabulu Coffee shop is just the other side of Yonge St, 3 minutes walk and highly rated, whether you're



exploring a lively market or immersing yourself in an event, looking for a pick-me-up or a spot to grab a seat, Nabulu is there to elevate the experience by bringing the finest third-wave coffee culture to you. Mabu Generation is a trendy, Taiwanese Fusion Cuisine and highly rated, around the corner. Storm Crow Mansion, Toronto's geekiest bar! Opened in late 2018 in an elegant Church St mansion, it includes a sanity-shattering array of theme rooms, secret doors, catacombs, cyberpunk bars, glowing, bubbling cocktails, randomly-generated burgers and, oh yeah, tentacles. Immerse yourself in the cities vibrant culture while living in absolute serenity.

(id:6289)

Essential Information

Listing #	C12295516
Price	\$1,198,000
Bedrooms	4
Bathrooms	3.00
Half Baths	1
Type	Single Family
Sub-Type	Condominium/Strata
Style	Multi-level

Community Information

Address	25 Dundonald Street
Subdivision	Church-Yonge Corridor
City	Toronto (church-Yonge Corridor)
Province	Ontario
Postal Code	M4Y1K3

Amenities

Features	Balcony, Carpet Free
Parking Spaces	1
Parking	Garage, Underground
# of Garages	1

Interior

Appliances	Water Heater
Heating	Electric Heat Pump
Cooling	Central air conditioning
Fireplace	Yes
Basement	Separate entrance, Walk out

Exterior

Exterior	Brick
----------	-------

Listing Details

Listing Office	EXP REALTY
----------------	------------



The trademarks MLS®, Multiple Listing Service® and the associated logos are owned by The Canadian Real Estate Association (CREA) and identify the quality of services provided by real estate professionals who are members of CREA. REALTOR®. Member of CREA and more.

Listing information last updated on October 14th, 2025 at 1:16am PDT