

\$475,000 - Aspen Drive, Edson

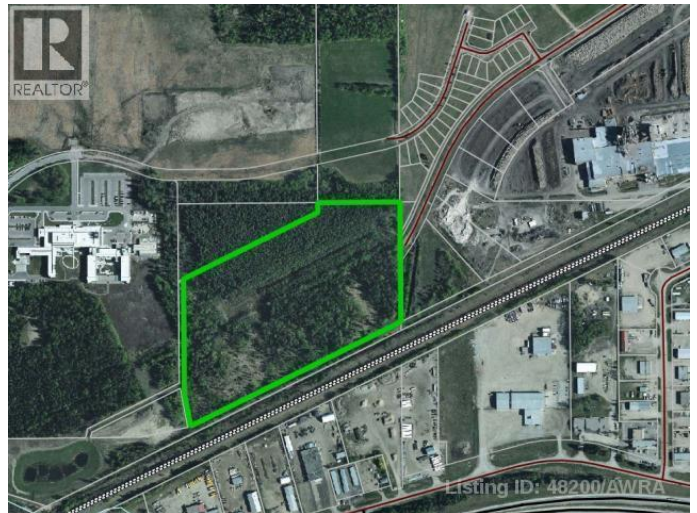
MLS® #AW48200

\$475,000

0 Bedroom, 0.00 Bathroom,
Vacant Land on 30.05 Acres

N/A, Edson, Alberta

Fantastic opportunity to own approximately 30 acres in town limits. Strategically located in the east end of Edson between the new Edson hospital and the Weyerhaeuser mill. The property is currently zoned Urban Reserve but with rezoning and Town approval the development possibilities are endless!
(id:6289)



Essential Information

Listing #	AW48200
Price	\$475,000
Bathrooms	0.00
Acres	30.05
Type	Vacant Land

Community Information

Address	Aspen Drive
Subdivision	N/A
City	Edson
Province	Alberta

Listing Details

Listing Office ROYAL LEPAGE EDSON REAL ESTATE



The trademarks MLS®, Multiple Listing Service® and the associated logos are owned by The Canadian Real Estate Association (CREA) and identify the quality of services provided by real estate professionals who are members of

CREA. REALTOR®. Member of CREA and more.
Listing information last updated on October 12th, 2025 at 9:46pm PDT