

\$3,500,000 - 654000 Highway 812, Rural Athabasca County

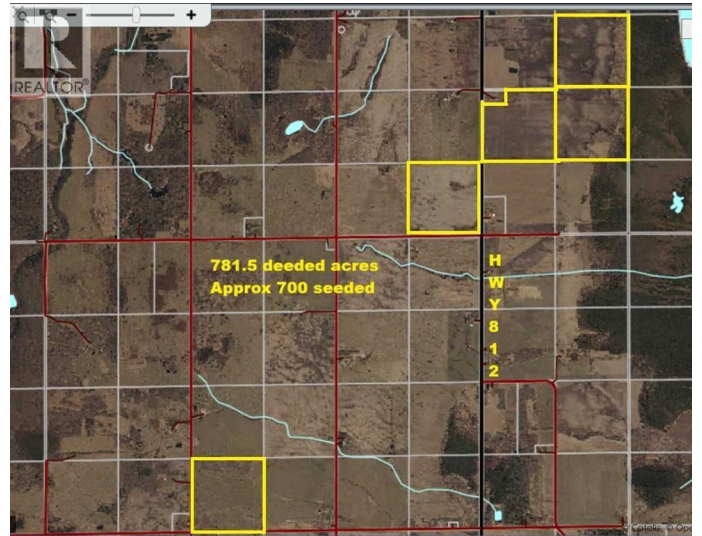
MLS® #A2265704

\$3,500,000

0 Bedroom, 0.00 Bathroom,
Vacant Land on 781.54 Acres

N/A, Rural Athabasca County, Alberta

5 quarters of grainland SW of Athabasca, in Athabasca County. 781 acres deeded. Approx 700 acres cultivated. Most of the land is in forage seed production. Buyer can continue these contracts or venture on their own cropping program. CLI#3 soil. Excellent opportunity to expand at prices lower than many areas. (id:6289)



Essential Information

| | |
|-----------|-------------|
| Listing # | A2265704 |
| Price | \$3,500,000 |
| Bathrooms | 0.00 |
| Acres | 781.54 |
| Type | Vacant Land |
| Sub-Type | Freehold |

Community Information

| | |
|-------------|------------------------|
| Address | 654000 Highway 812 |
| Subdivision | N/A |
| City | Rural Athabasca County |
| Province | Alberta |
| Postal Code | T9S2A4 |

Listing Details

Listing Office ROYAL LEPAGE COUNTY REALTY



The trademarks MLS®, Multiple Listing Service® and the associated logos are owned by The Canadian Real Estate Association (CREA) and identify the quality of services provided by real estate professionals who are members of CREA. REALTOR®. Member of CREA and more.

Listing information last updated on October 21st, 2025 at 6:01am PDT