

\$599,800 - 412 Highland Close, Strathmore

MLS® #A2264125

\$599,800

4 Bedroom, 3.00 Bathroom, 1,301 sqft

Single Family on 0.13 Acres

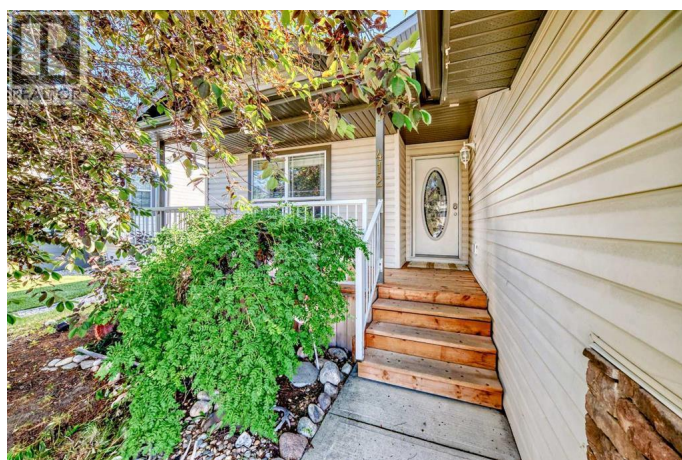
Hillview Estates, Strathmore, Alberta

Located in the quiet and desirable Hillview Estates, this well-maintained 4-bedroom, 3-bathroom home offers comfort, style, and functionality. Features include a spacious open-concept layout, quartz countertops, heated double attached garage and a walk-out basement. Recent updates (all within the past year) include A/C, water heater, water softener, deck with cedar pergolaâ€”perfect for outdoor entertaining. Enjoy added luxury with a private 4 person wet / dry sauna. The family-friendly neighborhood is close to the Strathmore Golf Club, baseball diamonds, soccer fields, parks, playgrounds, a hockey arena, skateboard park, and other recreational amenities. Donâ€™t miss this opportunityâ€”book your showing today! (id:6289)

Built in 2005

Essential Information

| | |
|----------------|---------------|
| Listing # | A2264125 |
| Price | \$599,800 |
| Bedrooms | 4 |
| Bathrooms | 3.00 |
| Square Footage | 1,301 |
| Acres | 0.13 |
| Year Built | 2005 |
| Type | Single Family |
| Sub-Type | Freehold |



Style Bungalow

Community Information

Address 412 Highland Close
Subdivision Hillview Estates
City Strathmore
Province Alberta
Postal Code T1P1V4

Amenities

Amenities Golf Course, Park, Playground
Features Other
Parking Spaces 4
Parking Attached Garage
of Garages 2

Interior

Appliances Washer, Refrigerator, Range - Electric, Dishwasher, Dryer
Heating Forced air
Cooling Central air conditioning
of Stories 1
Has Basement Yes
Basement Walk out

Exterior

Exterior Stone, Vinyl siding
Exterior Features Landscaped
Foundation Poured Concrete

Listing Details

Listing Office First Place Realty



The trademarks MLS®, Multiple Listing Service® and the associated logos are owned by The Canadian Real Estate Association (CREA) and identify the quality of services provided by real estate professionals who are members of CREA. REALTOR®. Member of CREA and more.

Listing information last updated on October 14th, 2025 at 3:01pm PDT