

\$259,000 - 212, 300 Marina Drive, Chestermere

MLS® #A2263973

\$259,000

2 Bedroom, 1.00 Bathroom, 756 sqft

Single Family on 0.00 Acres

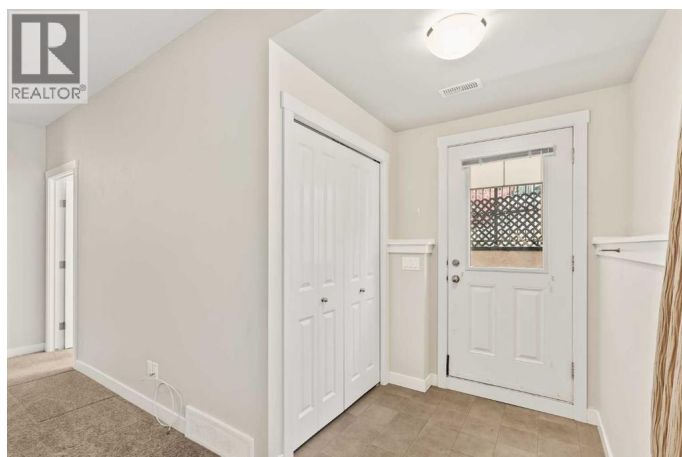
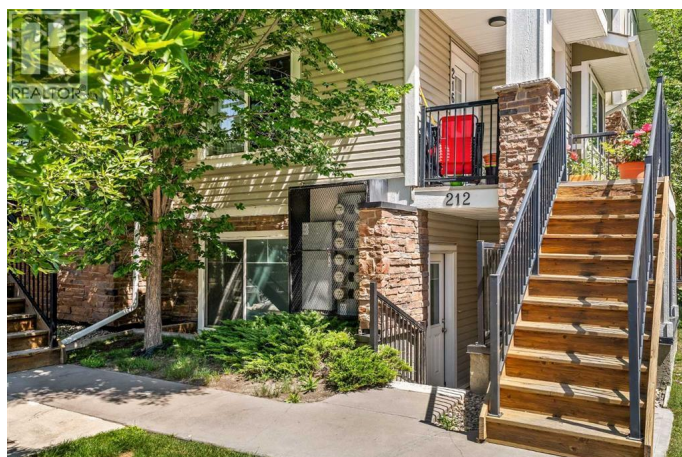
Westmere, Chestermere, Alberta

Why rent when you can own for less and start building equity?! Welcome to #212 300 Marina Drive! This townhouse is perfect for first-time home buyers or investors. Located in the highly sought-after Chestermere Station complex, this location provides the perfect blend of comfort and convenience. Step into this exceptionally maintained single-level 2 bed, 1 bath unit that offers an open concept floor plan. Featuring a large living room, a good-sized kitchen with ample cabinet space and a peninsula island, large windows that provide an abundance of natural light, and a laundry room large enough for additional storage. This unit comes with one parking stall steps from your door and plenty of visitor parking for your guests. Located close to all of Chestermere's amenities, including shopping, restaurants, professional services, the beach, parks, walking and biking paths, as well as the rec center! Just a short drive to East Hills Shopping Center with Costco, Walmart, Cineplex, and much more. Book you're showing today to see the value in this townhome! (id:6289)

Built in 2012

Essential Information

Listing #	A2263973
Price	\$259,000
Bedrooms	2



Bathrooms	1.00
Square Footage	756
Acres	0.00
Year Built	2012
Type	Single Family
Sub-Type	Condominium/Strata
Style	Bungalow

Community Information

Address	212, 300 Marina Drive
Subdivision	Westmere
City	Chestermere
Province	Alberta
Postal Code	T1X0P6

Amenities

Amenities	Playground, Schools, Shopping, Water Nearby
Features	See remarks, No Smoking Home, Parking
Parking Spaces	1

Interior

Appliances	Washer, Refrigerator, Dishwasher, Stove, Dryer, Microwave Range Hood Combo, Window Coverings
Heating	Forced air
Cooling	None
# of Stories	1

Exterior

Exterior	Stone, Vinyl siding
Exterior Features	Landscaped
Construction	Wood frame
Foundation	Poured Concrete

Listing Details

Listing Office	RE/MAX First
----------------	--------------



Association (CREA) and identify the quality of services provided by real estate professionals who are members of CREA. REALTOR®. Member of CREA and more.

Listing information last updated on October 12th, 2025 at 6:01pm PDT