

\$1,520,000 - 192 St And 450 Ave W, Rural Foothills County

MLS® #A2263618

\$1,520,000

0 Bedroom, 0.00 Bathroom,
Vacant Land on 160.00 Acres

N/A, Rural Foothills County, Alberta

Terrific quarter section with very good pasture land and approximately 40 acres of hayland. Many excellent building sites back in away from the road with great mountain views to the west. Trees and bush on the southern portion to enhance these building sites. The access to this land is in the NE corner of the quarter. Fully fenced and crossed fenced. Scenic but functional corrals in the SW corner. Quick possession. Can be purchased with the NE quarter. MLS #A2263582 (id:6289)

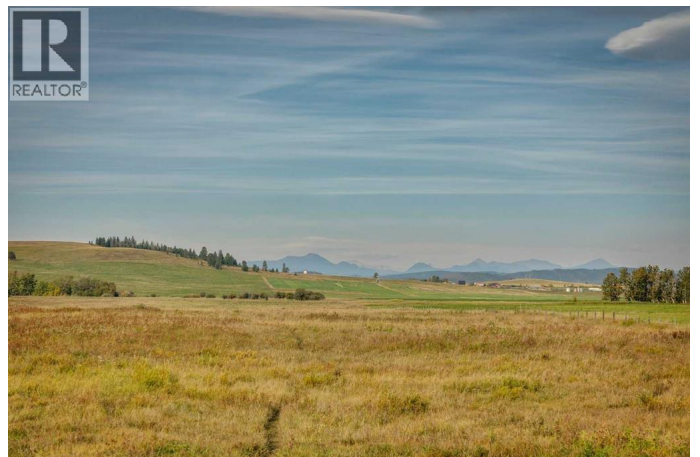
Essential Information

Listing #	A2263618
Price	\$1,520,000
Bathrooms	0.00
Acres	160.00
Type	Vacant Land
Sub-Type	Freehold

Community Information

Address	192 St And 450 Ave W
Subdivision	N/A
City	Rural Foothills County
Province	Alberta
Postal Code	T1S1V3

Listing Details



Listing Office

RE/MAX First



The trademarks MLS®, Multiple Listing Service® and the associated logos are owned by The Canadian Real Estate Association (CREA) and identify the quality of services provided by real estate professionals who are members of CREA. REALTOR®. Member of CREA and more.

Listing information last updated on October 12th, 2025 at 9:16am PDT