

\$349,000 - 202, 151 Panatella Landing Nw, Calgary

MLS® #A2263075

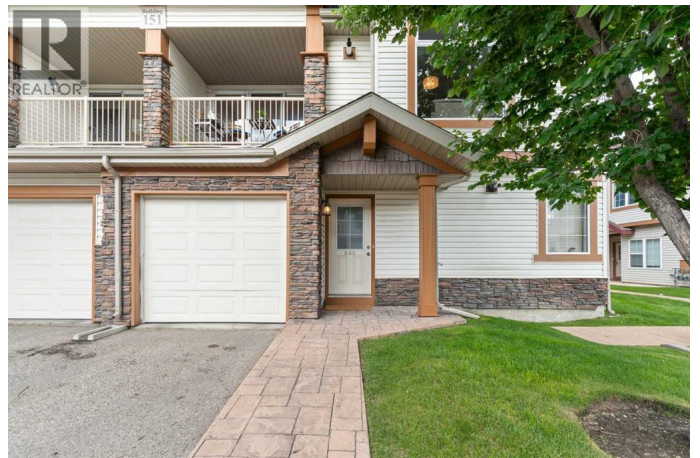
\$349,000

2 Bedroom, 2.00 Bathroom, 1,258 sqft

Single Family on 0.00 Acres

Panorama Hills, Calgary, Alberta

Welcome to this charming and well-maintained townhouse in the highly desirable community of Panorama Hills. This inviting 2-bedroom, 2-bathroom home offers comfort, functionality, and convenience – ideal for first-time buyers, small families, or downsizers seeking a low-maintenance lifestyle. As you enter, you’re greeted by vaulted ceilings that create a bright, spacious, and airy living space. The open-concept floor plan seamlessly connects the living room, dining area, and kitchen, making it perfect for entertaining. Large east-facing windows and a private east-facing balcony invite abundant natural light, providing the perfect spot to enjoy your morning coffee or tea. This home features several recent upgrades, including a newer tankless hot water heater, in-floor heating, updated carpet, newer paint throughout, stainless steel appliances, and new window blinds. The attached garage offers secure parking and additional storage, while visitor parking is conveniently located right beside the main entrance. Enjoy peace and privacy in this quiet cul-de-sac location with low condo fees, allowing for a worry-free lifestyle. Panorama Hills is a family-friendly community with exceptional amenities – parks, highly rated schools, shopping centres, restaurants, and public transit all nearby. Plus, the quick access to Stoney Trail Highway makes commuting across Calgary fast and convenient. Don’t miss this opportunity to own a beautiful townhouse in one of Calgary’s most



sought-after neighbourhoods. Contact today to schedule a private showing! (id:6289)

Built in 2008

Essential Information

| | |
|----------------|--------------------|
| Listing # | A2263075 |
| Price | \$349,000 |
| Bedrooms | 2 |
| Bathrooms | 2.00 |
| Square Footage | 1,258 |
| Acres | 0.00 |
| Year Built | 2008 |
| Type | Single Family |
| Sub-Type | Condominium/Strata |

Community Information

| | |
|-------------|-------------------------------|
| Address | 202, 151 Panatella Landing Nw |
| Subdivision | Panorama Hills |
| City | Calgary |
| Province | Alberta |
| Postal Code | T3K0K8 |

Amenities

| | |
|----------------|--|
| Amenities | Park, Playground, Schools, Shopping, Other |
| Features | Cul-de-sac, Other, Parking |
| Parking Spaces | 2 |
| Parking | Attached Garage |
| # of Garages | 1 |

Interior

| | |
|--------------|---|
| Appliances | Washer, Refrigerator, Dishwasher, Stove, Dryer, Microwave Range Hood Combo, Garage door opener, Water Heater - Tankless |
| Heating | In Floor Heating |
| Cooling | None |
| # of Stories | 1 |

Exterior

| | |
|----------|---------------------|
| Exterior | Stone, Vinyl siding |
|----------|---------------------|

| | |
|--------------|-----------------|
| Construction | Wood frame |
| Foundation | Poured Concrete |

Listing Details

Listing Office RE/MAX Real Estate (Mountain View)



The trademarks MLS®, Multiple Listing Service® and the associated logos are owned by The Canadian Real Estate Association (CREA) and identify the quality of services provided by real estate professionals who are members of CREA. REALTOR®. Member of CREA and more.

Listing information last updated on October 13th, 2025 at 2:01am PDT