

\$699,000 - 337 Bridleridge View Sw, Calgary

MLS® #A2262614

\$699,000

4 Bedroom, 4.00 Bathroom, 2,005 sqft

Single Family on 0.09 Acres

Bridlewood, Calgary, Alberta

Terrific family home in the family oriented community of Bridlewood. Quality built by Centrex Homes with close to 2000 SQFT. Close to all amenities. Close to schools, playground, public transportation and Laminate through out the house, granite counter top. Unique 2 way fire place (Inside facing the family room/out to the deck. See the picture) over size jetted tub. You truly would be proud to call this home...Your Home...).

(id:6289)

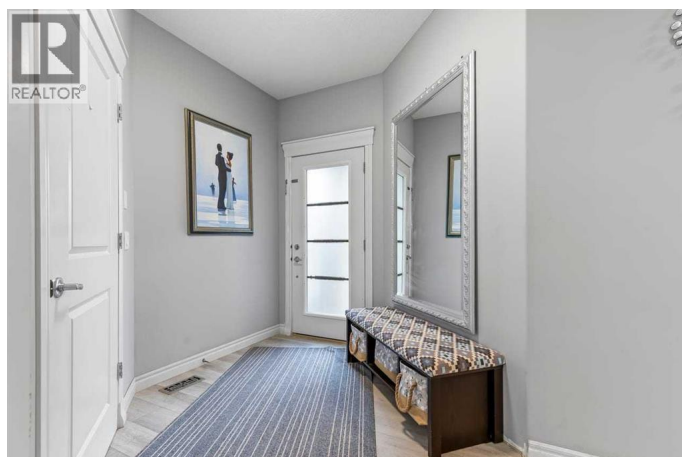
Built in 2008

Essential Information

| | |
|----------------|---------------|
| Listing # | A2262614 |
| Price | \$699,000 |
| Bedrooms | 4 |
| Bathrooms | 4.00 |
| Half Baths | 1 |
| Square Footage | 2,005 |
| Acres | 0.09 |
| Year Built | 2008 |
| Type | Single Family |
| Sub-Type | Freehold |

Community Information

| | |
|-------------|-------------------------|
| Address | 337 Bridleridge View Sw |
| Subdivision | Bridlewood |
| City | Calgary |
| Province | Alberta |



Postal Code T2Y0E6

Amenities

Amenities Park, Playground, Schools, Shopping
Features PVC window, No Smoking Home, Gas BBQ Hookup
Parking Spaces 4
Parking Attached Garage, Concrete
of Garages 2

Interior

Appliances Refrigerator, Oven - Electric, Water softener, Dishwasher, Stove, Microwave Range Hood Combo, Window Coverings, Garage door opener, Washer & Dryer
Heating Natural gas Forced air
Cooling None
Fireplace Yes
of Fireplaces 2
of Stories 2
Has Basement Yes
Basement Suite

Exterior

Exterior Vinyl siding
Exterior Features Landscaped
Construction Wood frame
Foundation Poured Concrete

Listing Details

Listing Office Real Estate Professionals Inc.



The trademarks MLS®, Multiple Listing Service® and the associated logos are owned by The Canadian Real Estate Association (CREA) and identify the quality of services provided by real estate professionals who are members of CREA. REALTOR®. Member of CREA and more.

Listing information last updated on October 13th, 2025 at 5:01pm PDT