

\$449,900 - 77, 5810 Patina Drive Sw, Calgary

MLS® #A2262528

\$449,900

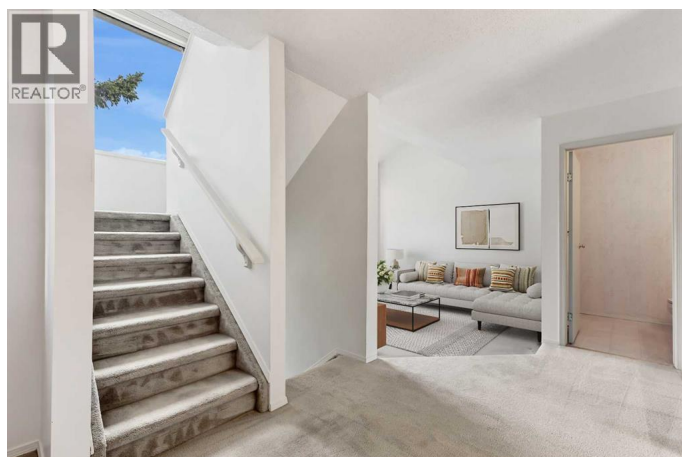
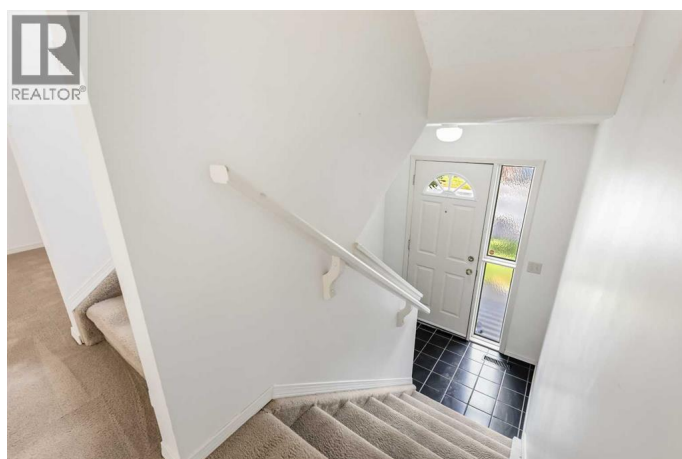
2 Bedroom, 3.00 Bathroom, 1,594 sqft

Single Family on 0.00 Acres

Patterson, Calgary, Alberta

*** OPEN HOUSE Oct 12, 2025 2-4PM ***

Welcome to #77, 5810 Patina Drive SW â€™ a beautifully maintained multi-level townhome nestled in the picturesque community of Patterson. Offering over 1,590 Sq.Ft. of above-grade living space plus a fully developed basement, this home features a total of two bedrooms + family room, providing space and flexibility for your lifestyle. The main level boasts vaulted ceilings, a bright and welcoming living room with a cozy gas fireplace, and a mix of carpet and laminate flooring throughout. The kitchen is both functional and inviting, with white cabinetry, a central kitchen island, brand new stainless steel appliances, and a full pantry. Enjoy seamless flow between the formal dining room and the sun-soaked breakfast nook, which opens to your rear deck. Outdoor living is a highlight here, with a front balcony for morning coffee and a rear deck backing directly onto a beautiful park and shared greenspace, offering expansive city skyline views. Upstairs, the primary suite features a 3-piece ensuite, while the second bedroom, full bath, and bright family room add comfort and versatility. Downstairs, the fully developed basement includes a large recreation room, a charming wood-burning fireplace, rough-in for a future bathroom, laundry/utility space, and direct access to the attached single garage. The home also includes a brand new 60-gallon hot water tank and excellent storage options. This well-managed, pet-friendly complex offers a



peaceful lifestyle surrounded by mature landscaping and pathways, with easy access to downtown Calgary, Westside Rec Centre, C-Train, shopping, and top-rated schools. Pets are allowed with board approval (id:6289)

Built in 1990

Essential Information

Listing #	A2262528
Price	\$449,900
Bedrooms	2
Bathrooms	3.00
Half Baths	1
Square Footage	1,594
Acres	0.00
Year Built	1990
Type	Single Family
Sub-Type	Condominium/Strata

Community Information

Address	77, 5810 Patina Drive Sw
Subdivision	Patterson
City	Calgary
Province	Alberta
Postal Code	T3H2Y6

Amenities

Amenities	Park, Playground, Schools, Shopping
Features	See remarks, Parking
Parking Spaces	1
Parking	Attached Garage
# of Garages	1

Interior

Appliances	Refrigerator, Dishwasher, Stove, Window Coverings, Garage door opener
Heating	Natural gas, Wood Other, Forced air
Cooling	None

Fireplace	Yes
# of Fireplaces	2
# of Stories	2
Has Basement	Yes

Exterior

Exterior	Brick, Stucco
Exterior Features	Landscaped
Foundation	Poured Concrete

Listing Details

Listing Office	RE/MAX Complete Realty
----------------	------------------------



The trademarks MLS®, Multiple Listing Service® and the associated logos are owned by The Canadian Real Estate Association (CREA) and identify the quality of services provided by real estate professionals who are members of CREA. REALTOR®. Member of CREA and more.

Listing information last updated on October 13th, 2025 at 9:16pm PDT