

# \$769,900 - 136 Aspenmere Close, Chestermere

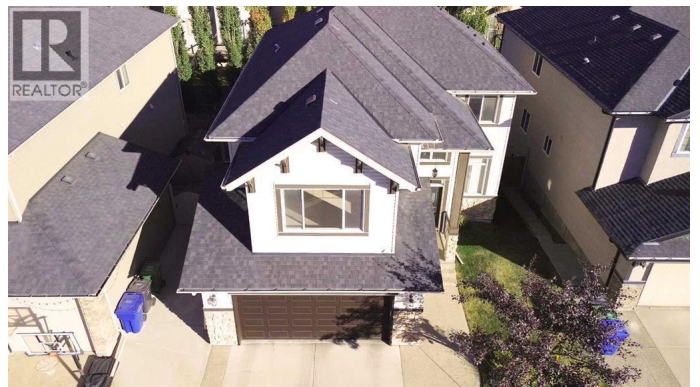
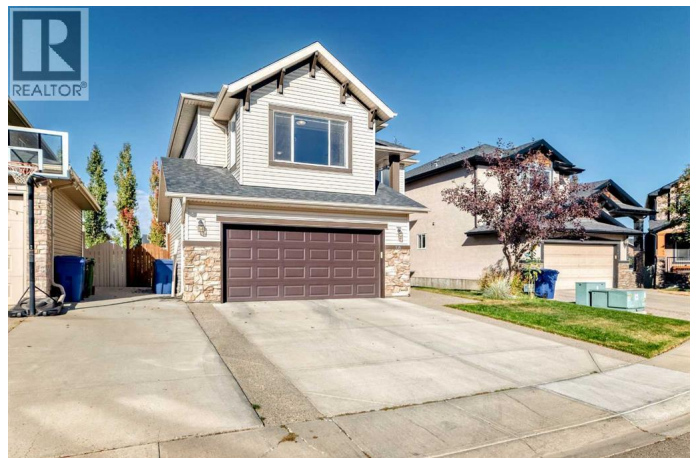
MLS® #A2262363

**\$769,900**

5 Bedroom, 4.00 Bathroom, 2,336 sqft  
Single Family on 0.12 Acres

Westmere, Chestermere, Alberta

Welcome to 136 Aspenmere Close! Offering over 3000 sq ft of living space, this Immaculate five bedroom home, is move in ready and complete with a 'professionally finished' fully developed walk out basement! Priced to sell, this beautiful home is tucked away on a quiet street surrounded by other 'EXECUTIVE STYLE' homes, close to the lake, shops and amenities! Step inside and be greeted by a large foyer! There is a main floor flex room, ideal to use as an office! For the chef in the house, the kitchen is fully upgraded with stainless steel appliances, a large island, granite countertops and full height cabinetry! The bright and open living room offers a gas fireplace and plenty of space to arrange your furniture, creating the ideal setting for family gatherings and quiet evenings at home! A two piece powder room and laundry complete the main floor! The upper level boasts four large bedrooms and massive bonus room! The spacious primary bedroom offers a relaxing retreat with plenty of space for a king sized bed and additional furnishings! For the ultimate in relaxation, there is a well designed ensuite complete with dual sinks, an oversized shower and a soaker tub! There is a full four piece bath on this upper level plus the oversized bonus room, ideal for family movie nights!! The lower walk out level is fully developed with a large rec room, four piece bath and the fifth bedroom! The yard is fully landscaped and private with mature trees and featuring a spacious concrete patio, ideal for



summer BBQ's, outdoor dining, or simply relaxing in the sunshine! If a hot tub is on your wish list, the Electrical is already in place! The garage is oversized, measuring 21'0 x 23'7. Call to book your showing today! (id:6289)

Built in 2010

### Essential Information

Listing #	A2262363
Price	\$769,900
Bedrooms	5
Bathrooms	4.00
Half Baths	1
Square Footage	2,336
Acres	0.12
Year Built	2010
Type	Single Family
Sub-Type	Freehold

### Community Information

Address	136 Aspenmere Close
Subdivision	Westmere
City	Chestermere
Province	Alberta
Postal Code	T1X0C3

### Amenities

Amenities	Golf Course, Park, Playground, Schools, Shopping, Water Nearby
Features	Closet Organizers, No Smoking Home, Level, Gas BBQ Hookup
Parking Spaces	4
Parking	Attached Garage
# of Garages	2

### Interior

Appliances	Washer, Refrigerator, Dishwasher, Stove, Dryer, Microwave, Hood Fan, See remarks, Window Coverings
Heating	Forced air
Cooling	None

Fireplace	Yes
# of Fireplaces	1
# of Stories	2
Has Basement	Yes
Basement	Walk out

### **Exterior**

Exterior Features	Landscaped
Construction	Wood frame
Foundation	Poured Concrete

### **Listing Details**

Listing Office      Stonemere Real Estate Solutions



The trademarks MLS®, Multiple Listing Service® and the associated logos are owned by The Canadian Real Estate Association (CREA) and identify the quality of services provided by real estate professionals who are members of CREA. REALTOR®. Member of CREA and more.

Listing information last updated on October 12th, 2025 at 9:31pm PDT