

\$398,000 - 147 Somervale Park Sw, Calgary

MLS® #A2262192

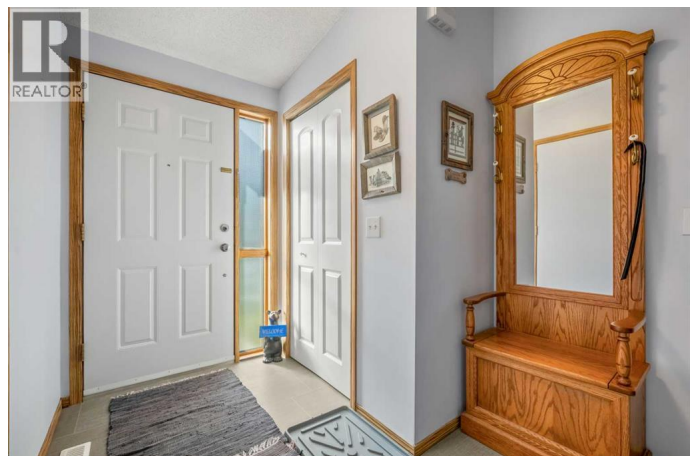
\$398,000

2 Bedroom, 1.00 Bathroom, 931 sqft

Single Family on 0.04 Acres

Somerset, Calgary, Alberta

Welcome to Beautifully Maintained Somervale Park This immaculately kept complex features a serene setting with mature trees and a peaceful green space backing your unit. The complex had all-new roofs installed just two years ago, ensuring peace of mind for years to come. Step inside this bright and neutral home offering just under 1,000 sq. ft. of stylish living space, with a cozy living room that features a charming gas fireplace and flows seamlessly to your private east-facing patio, offering tranquil views of the lush courtyard—ideal for relaxing or outdoor dining. There is a well appointed kitchen with ample counter space, new appliances, fresh paint, updated kitchen cabinets with new hardware, microwave hood fan. New Lino tile in the kitchen and updated lighting throughout. Upstairs, the large primary bedroom includes a walk-in closet, and the upper level boasts new upgraded carpet with 10 lb. underlay. There is a second bedroom currently used as an office. The renovated 4 piece bath has new luxury Vinyl Plank, new toilet, sink and shower feature. All poly-b plumbing has been professionally removed, adding to the home's value and reliability. The lower level has the laundry with a water softener, folding table and storage. Enjoy the convenience of a single attached garage, plus parking on your front driveway. Visitor parking is just steps away for your guests. Located in a prime location just a short walk to: Shawnessy Shopping Centre LRT Station, Cardel Rec Centre / YMCAMultiple schools and



playgroundsThis home truly offers the best of convenience, comfort, and location. (id:6289)

Built in 1995

Essential Information

Listing #	A2262192
Price	\$398,000
Bedrooms	2
Bathrooms	1.00
Square Footage	931
Acres	0.04
Year Built	1995
Type	Single Family
Sub-Type	Bare Land Condo
Style	3 Level

Community Information

Address	147 Somervale Park Sw
Subdivision	Somerset
City	Calgary
Province	Alberta
Postal Code	T2Y3J4

Amenities

Amenities	Playground, Schools, Shopping
Features	Cul-de-sac, No Smoking Home, Parking
Parking Spaces	2
Parking	Attached Garage
# of Garages	1

Interior

Appliances	Water softener, Range - Electric, Dishwasher, Microwave Range Hood Combo, Window Coverings, Garage door opener
Heating	Natural gas Forced air
Cooling	None
Fireplace	Yes
# of Fireplaces	1
Has Basement	Yes

Exterior

Exterior	Brick, Vinyl siding
Exterior Features	Landscaped
Construction	Wood frame
Foundation	Poured Concrete

Listing Details

Listing Office Royal LePage Solutions



The trademarks MLS®, Multiple Listing Service® and the associated logos are owned by The Canadian Real Estate Association (CREA) and identify the quality of services provided by real estate professionals who are members of CREA. REALTOR®. Member of CREA and more.

Listing information last updated on October 13th, 2025 at 10:16am PDT