

\$1,425,000 - 33 Paintbrush Park, Rural Rocky View County

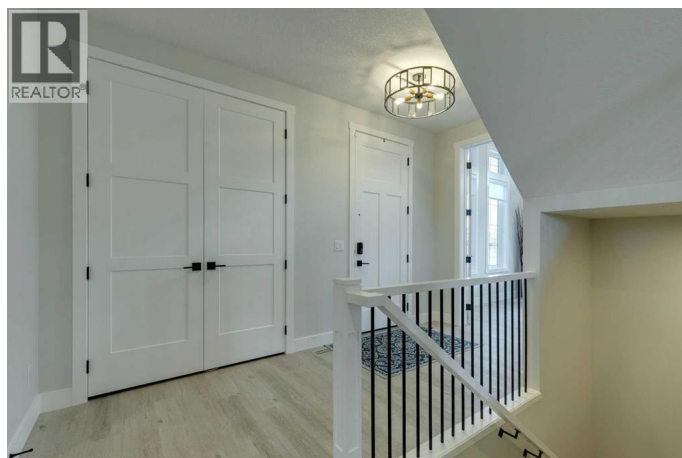
MLS® #A2262166

\$1,425,000

4 Bedroom, 4.00 Bathroom, 2,665 sqft
Single Family on 0.28 Acres

Harmony, Rural Rocky View County, Alberta

Welcome to 33 Paintbrush Park – a beautifully appointed residence set on an huge (.28 acre), landscaped corner lot fronting the park and a short stroll to Harmony Lake. Offering more than 3,500 SQFT of fully-developed living space, this home seamlessly combines thoughtful design with elegant finishes. The inviting foyer opens into a spacious, light-filled living area anchored by expansive windows that frame views of the covered deck, backyard, and surrounding greenspace and mountain vistas. At the heart of the home, the chef's kitchen features full-height cabinetry, generous quartz surfaces, a built-in wall oven and gas cooktop. A coffee and prep area (with bar fridge) is situated beside a discreet walk-in pantry. Everyday functionality is enhanced by an organized mudroom, winter coat room, and a side-entry triple garage. A private office overlooking the park provides the ideal work-from-home setting. Upstairs, a central bonus room offers a perfect retreat for family hangouts with peek-a-boo views to the lake. The elegant primary suite is bright and serene, with a spa-inspired ensuite showcasing designer tile, a curbless steam shower, and abundant vanity storage. A custom dressing room with extensive built-ins elevates everyday living. Two additional bedrooms share a well-appointed 4-piece bathroom with double vanities and a walk-in shower. The



fully-finished basement extends the living space with a fourth bedroom, full bath, and a large family room designed for games and movie nights. A built-in bar, complete with full-sized fridge and dishwasher, makes entertaining effortless. Ample storage includes an unfinished space easily convertible to a fifth bedroom if desired. This smartly equipped home includes air conditioning, irrigation controls, smart thermostat, two backyard gas lines, 240V rough-in for future hot tub, and additional conveniences like dual hot/cold hose bibs. Harmony is an award-winning lake community offering unmatched lifestyle amenities: two recreational lakes, Mickelson National Golf Course, LaunchPad, a pump track, extensive pathways, multiple playgrounds, local shops, and the exciting future Village Centre and Nordic Spa. (id:6289)

Built in 2022

Essential Information

Listing #	A2262166
Price	\$1,425,000
Bedrooms	4
Bathrooms	4.00
Half Baths	1
Square Footage	2,665
Acres	0.28
Year Built	2022
Type	Single Family
Sub-Type	Freehold

Community Information

Address	33 Paintbrush Park
Subdivision	Harmony
City	Rural Rocky View County
Province	Alberta
Postal Code	T3Z0C6

Amenities

Amenities	Golf Course, Park, Playground, Water Nearby
Features	Closet Organizers, Gas BBQ Hookup
Parking Spaces	6
Parking	Attached Garage
# of Garages	3

Interior

Appliances	Refrigerator, Cooktop - Gas, Dishwasher, Microwave, Oven - Built-In, Hood Fan, Window Coverings
Heating	Natural gas Forced air
Cooling	Central air conditioning
Fireplace	Yes
# of Fireplaces	1
# of Stories	2
Has Basement	Yes

Exterior

Exterior	Stone
Exterior Features	Landscaped, Underground sprinkler
Foundation	Poured Concrete

Listing Details

Listing Office Charles



The trademarks MLS®, Multiple Listing Service® and the associated logos are owned by The Canadian Real Estate Association (CREA) and identify the quality of services provided by real estate professionals who are members of CREA. REALTOR®. Member of CREA and more.

Listing information last updated on October 14th, 2025 at 2:46pm PDT