

# \$699,000 - 2406, 930 16 Avenue Sw, Calgary

MLS® #A2262135

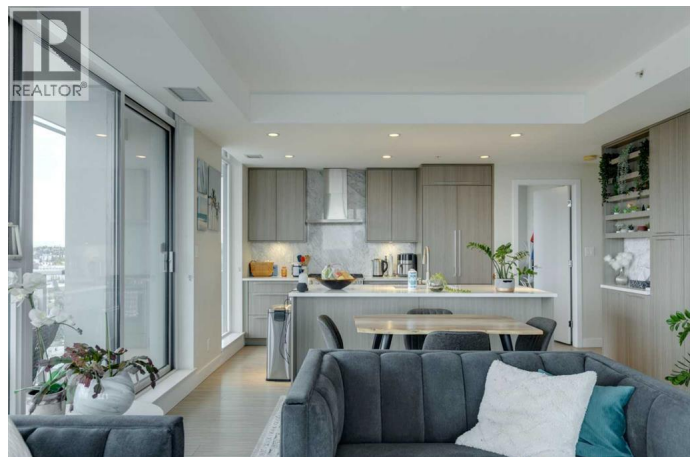
**\$699,000**

2 Bedroom, 2.00 Bathroom, 905 sqft

Single Family on 0.00 Acres

Beltline, Calgary, Alberta

Welcome Home to The Royal! This 2 bedroom south/south east facing corner unit is perfect for anyone looking for all the perks and convenience of inner city living. Floor to ceiling windows throughout this home flood the living spaces with natural light and provide amazing downtown and city views. Opening to the living and dining areas, the well-appointed kitchen has been equipped with a gas range, integrated refrigerator, built-in shelving and an 8'™ quartz island with breakfast bar. The nice sized south facing balcony is the perfect place to relax and entertain. The primary bedroom has a walk-in closet and 4 pc ensuite with double vanity and walk-in shower. Adding privacy, the 2nd bedroom and 4 pc main bath are located on the opposite side of the unit. Enjoy the convenient full sized in-suite laundry and comfort of central air. The amenities at The Royal are amazing bar none – residents enjoy the 10,000 sq ft Club Royal including a fully equipped fitness centre, squash court & sauna, private dining room with gourmet kitchen & resident's lounge, a beautiful garden terrace with barbeques, fire tables as well as 24 hr concierge service. Included is assigned heated, underground parking and an assigned storage locker. Located 1 block off lively 17th Ave SW where residents enjoy bars, restaurants and shoppes and conveniently attached to Canadian Tire and Save-On Foods. Walking distance to Downtown and all the amenities of Mount Royal Village and Mount Royal West. Enjoy



easy access to transit, 17th Ave SW, 14th St,  
and the MNP Community & Sport Centre.  
(id:6289)

Built in 2019

**Essential Information**

|                |                    |
|----------------|--------------------|
| Listing #      | A2262135           |
| Price          | \$699,000          |
| Bedrooms       | 2                  |
| Bathrooms      | 2.00               |
| Square Footage | 905                |
| Acres          | 0.00               |
| Year Built     | 2019               |
| Type           | Single Family      |
| Sub-Type       | Condominium/Strata |

**Community Information**

|             |                        |
|-------------|------------------------|
| Address     | 2406, 930 16 Avenue Sw |
| Subdivision | Beltline               |
| City        | Calgary                |
| Province    | Alberta                |
| Postal Code | T2R1C2                 |

**Amenities**

|                |  |
|----------------|--|
| Amenities      | Park, Playground, Schools, Shopping, Exercise Centre, Party Room, Recreation Centre, Sauna |
| Features       | Sauna, Parking   |
| Parking Spaces | 1  |
| Parking        | Underground  |

**Interior**

|              |  |
|--------------|--|
| Appliances   | Refrigerator, Range - Gas, Dishwasher, Microwave, Hood Fan, Washer & Dryer |
| Cooling      | Central air conditioning   |
| # of Stories | 35   |

**Exterior**

|          |                 |
|----------|-----------------|
| Exterior | Concrete, Metal |
|----------|-----------------|

Construction

Poured concrete

## Listing Details

Listing Office

Royal LePage Benchmark



The trademarks MLS®, Multiple Listing Service® and the associated logos are owned by The Canadian Real Estate Association (CREA) and identify the quality of services provided by real estate professionals who are members of CREA. REALTOR®. Member of CREA and more.

Listing information last updated on October 12th, 2025 at 9:31pm PDT