

# \$565,000 - 588 Strathcona Drive Sw, Calgary

MLS® #A2262108

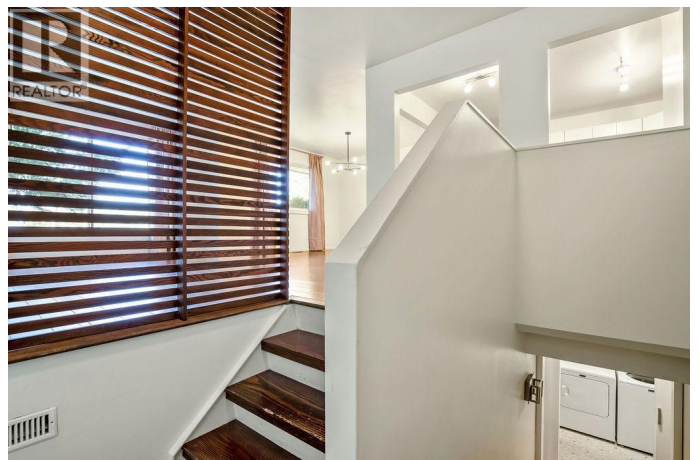
**\$565,000**

5 Bedroom, 2.00 Bathroom, 1,058 sqft

Single Family on 0.06 Acres

Strathcona Park, Calgary, Alberta

Strathcona Park | 5-Bedroom Semi-Detached Bungalow Rare opportunity to own in the highly sought-after community of Strathcona Park! Whether you're an investor, first-time buyer, or a growing family, this home has it all. Offering over 2,100 sq.ft. of developed living space, this well-maintained property features 5 bedrooms and 2 full bathrooms. Ideally located across from a beautiful park and within the school district for Ernest Manning High School and just steps to Olympic Heights Elementary, this home combines convenience with lifestyle. You're also minutes from downtown, top-rated private and public schools, Westside Recreation Centre, and only a 10-minute walk to the LRT. With the new ring road, getting around the city or out to the Rockies is easier than ever. Inside, a split staircase leads to the bright and open main level with large west-facing windows. The updated kitchen offers stainless steel appliances, quartz countertops, and direct access to the spacious living and dining areas. The primary bedroom features a patio door opening to a private balcony overlooking the landscaped backyard with mature trees. An updated 5-piece bathroom and two additional bedrooms complete the main floor. The fully developed lower level is perfect for family living or guests, boasting a large recreation room, two spacious legal bedrooms, a modernized bathroom, laundry room, and plenty of storage. Almost every window in the home has been upgraded



for peace of mind.Enjoy the countless amenities of Strathcona Park’s ravine pathways, dog parks, playgrounds and experience one of Calgary’s most desirable, family-friendly neighbourhoods.Don’t miss this incredible opportunity to own in Strathcona at outstanding value. Book your showing today!  
(id:6289)

Built in 1980

Essential Information

Listing #	A2262108
Price	\$565,000
Bedrooms	5
Bathrooms	2.00
Square Footage	1,058
Acres	0.06
Year Built	1980
Type	Single Family
Sub-Type	Freehold
Style	Bungalow

Community Information

Address	588 Strathcona Drive Sw
Subdivision	Strathcona Park
City	Calgary
Province	Alberta
Postal Code	T3H1K4

Amenities

Amenities	Park, Playground, Schools, Shopping
Features	See remarks, Back lane, No Smoking Home
Parking	None

Interior

Appliances	Washer, Refrigerator, Dishwasher, Stove, Dryer, Window Coverings
Heating	Natural gas Forced air
Cooling	None

# of Stories	1
Has Basement	Yes

## Exterior

Exterior	Brick, Metal
Exterior Features	Garden Area
Construction	Wood frame
Foundation	Poured Concrete

## Listing Details

Listing Office	CIR Realty
----------------	------------



The trademarks MLS®, Multiple Listing Service® and the associated logos are owned by The Canadian Real Estate Association (CREA) and identify the quality of services provided by real estate professionals who are members of CREA. REALTOR®. Member of CREA and more.

Listing information last updated on October 15th, 2025 at 3:01am PDT