

# \$774,900 - 258, 20 Midpark Crescent Se, Calgary

MLS® #A2261927

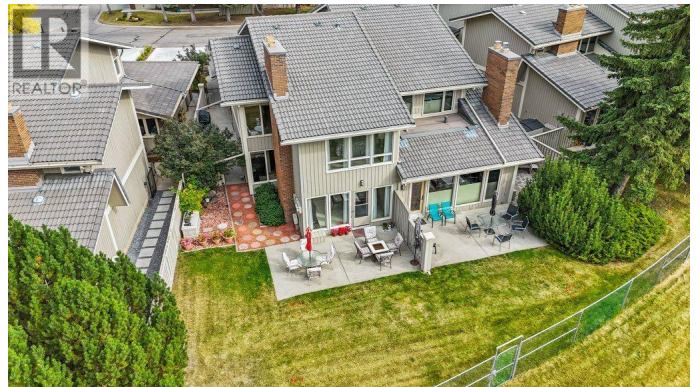
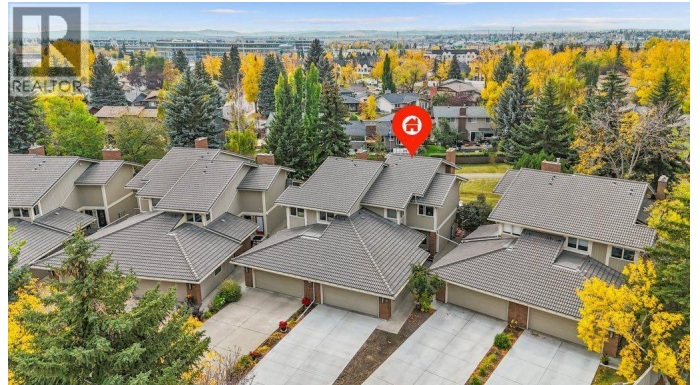
**\$774,900**

4 Bedroom, 4.00 Bathroom, 1,982 sqft

Single Family on 0.00 Acres

Midnapore, Calgary, Alberta

Welcome to this beautiful 2 storey home located in the sought after gated Westshore complex of Midnapore. Properties like this donâ€™t come up often, and this one has been exceptionally well cared for. It offers the perfect balance of comfort, style, and functionality in a setting thatâ€™s both private and inviting. Inside, the home opens to a bright, flowing layout with large windows that bring in plenty of natural light. The living room is a highlight with its impressive stone wood fireplace, and it opens directly to a spacious private patio backing onto greenspace and a walking pathâ€”the perfect spot for morning coffee or evening relaxation. The kitchen has been fully upgraded with wood countertops, modern fixtures, lighting, and flooring. A convenient laundry room is located just off the kitchen, and thereâ€™s also a separate dining room for hosting family and friends. Upstairs features a large primary bedroom with beautiful views of the greenspace, a walk-in closet, and a 4-piece ensuite. Two additional bedrooms and another 4-piece bathroom complete the upper level, providing plenty of space for family or guests. The lower level is fully finished, offering a flexible space that could work as a home theater, gym, or rec room. It also includes a bedroom, another 4-piece bathroom and a huge storage/ utility room. Living in Westshore means more than just owning a homeâ€”itâ€™s a lifestyle. Youâ€™ll enjoy private access to Midnapore Lake, perfect for kayaking, swimming, fishing,



or simply relaxing by the water. There are also plenty of walking and biking paths nearby. It's private and secure, while still being close to all amenities including shopping, schools, restaurants, and the CTrain. This is a rare opportunity to own in one of Calgary's most sought-after lake communities. (id:6289)

Built in 1980

Essential Information

Listing #	A2261927
Price	\$774,900
Bedrooms	4
Bathrooms	4.00
Half Baths	1
Square Footage	1,982
Acres	0.00
Year Built	1980
Type	Single Family
Sub-Type	Condominium/Strata

Community Information

Address	258, 20 Midpark Crescent Se
Subdivision	Midnapore
City	Calgary
Province	Alberta
Postal Code	T2X1P3

Amenities

Amenities	Park, Playground, Recreation Nearby, Schools, Shopping, Water Nearby
Features	No neighbours behind, No Animal Home, No Smoking Home, Parking
Parking Spaces	6
Parking	Attached Garage
# of Garages	2

Interior

Appliances	Refrigerator, Dishwasher, Stove, Microwave, Compactor, Window Coverings, Washer & Dryer
------------	---

Heating	Forced air
Cooling	None
Fireplace	Yes
# of Fireplaces	1
# of Stories	2
Has Basement	Yes

## Exterior

Exterior	Brick, Wood siding
Exterior Features	Landscaped, Lawn
Construction	Wood frame
Foundation	Poured Concrete

## Listing Details

Listing Office RE/MAX iRealty Innovations



The trademarks MLS®, Multiple Listing Service® and the associated logos are owned by The Canadian Real Estate Association (CREA) and identify the quality of services provided by real estate professionals who are members of CREA. REALTOR®. Member of CREA and more.

Listing information last updated on October 13th, 2025 at 7:46am PDT